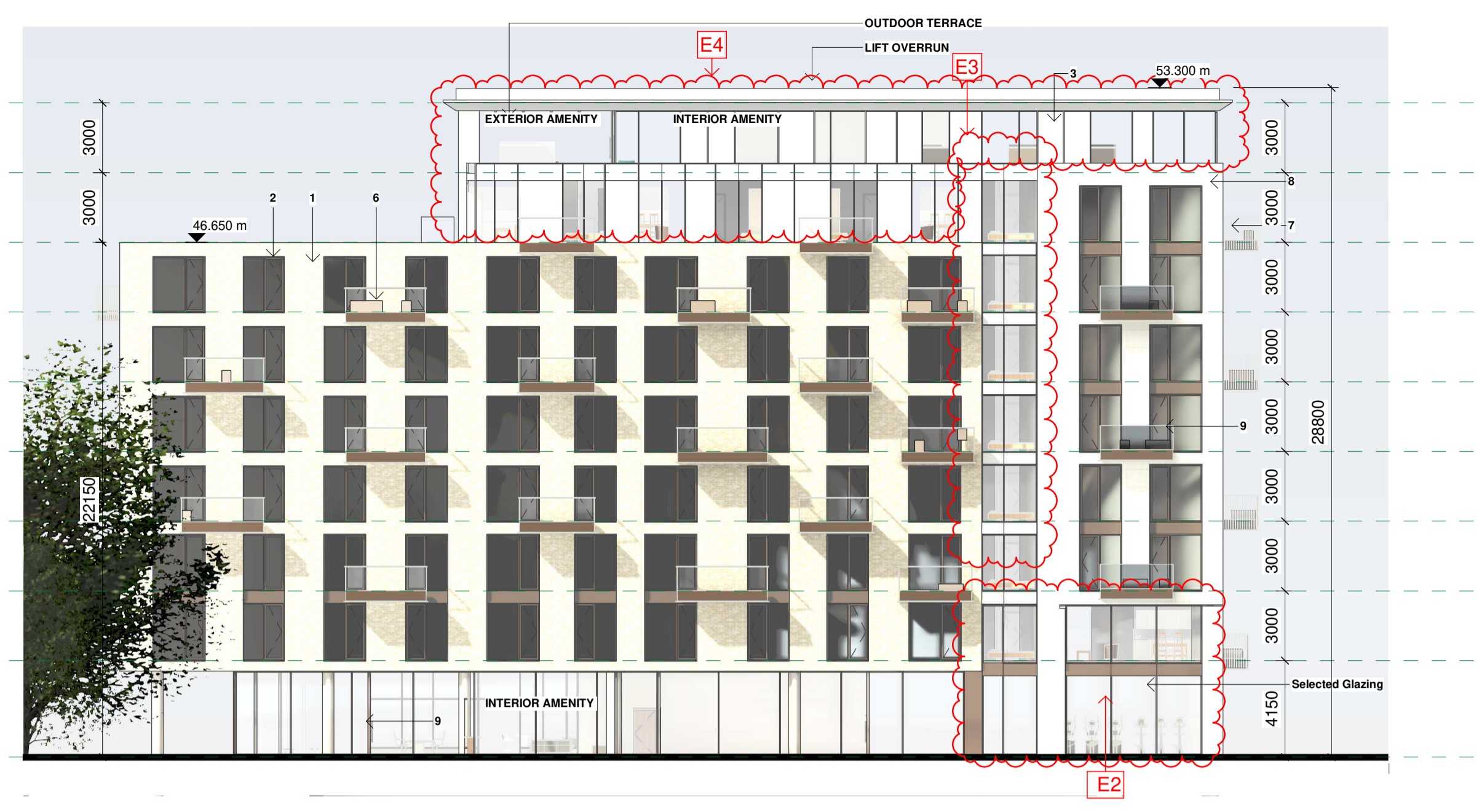
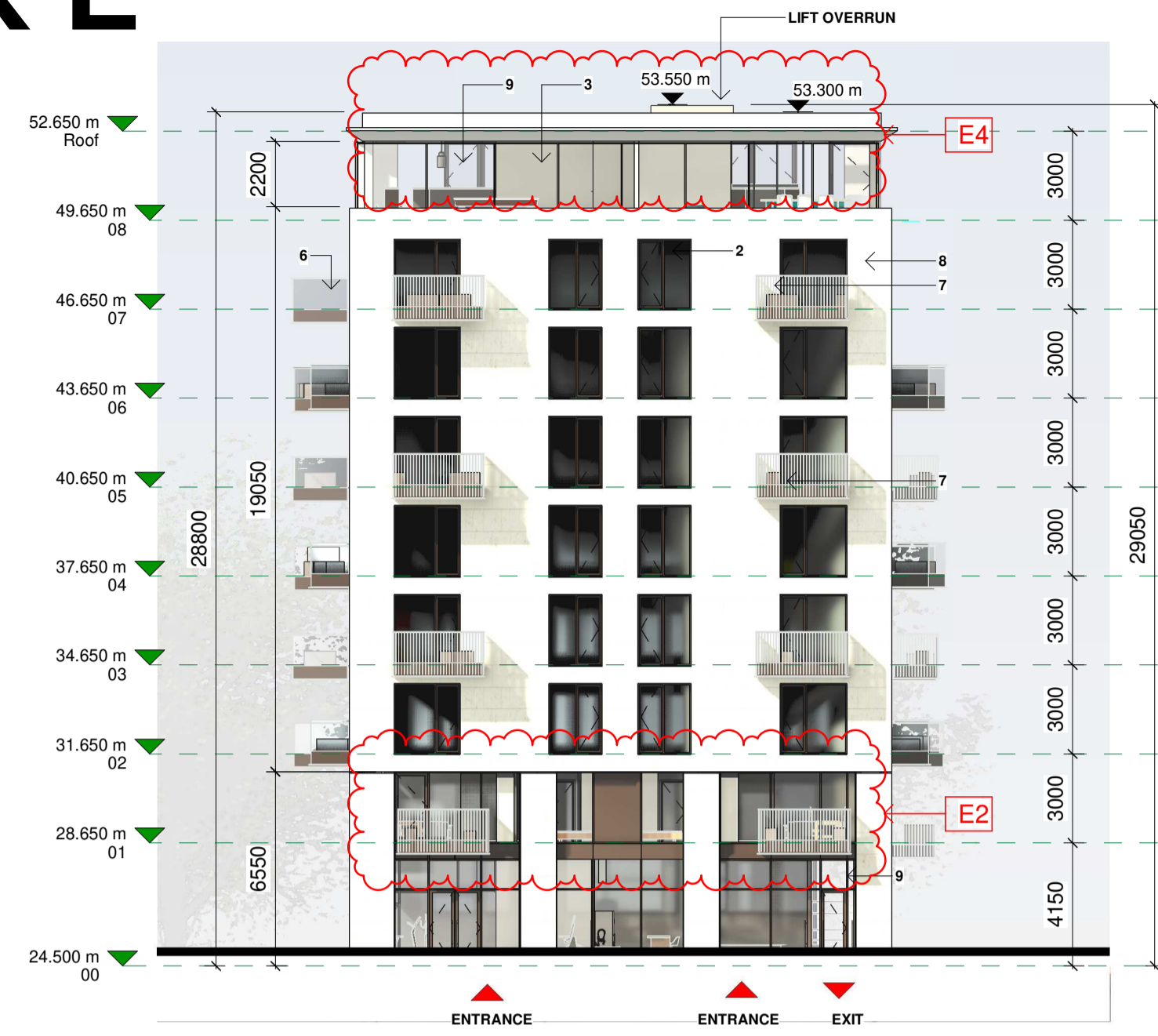


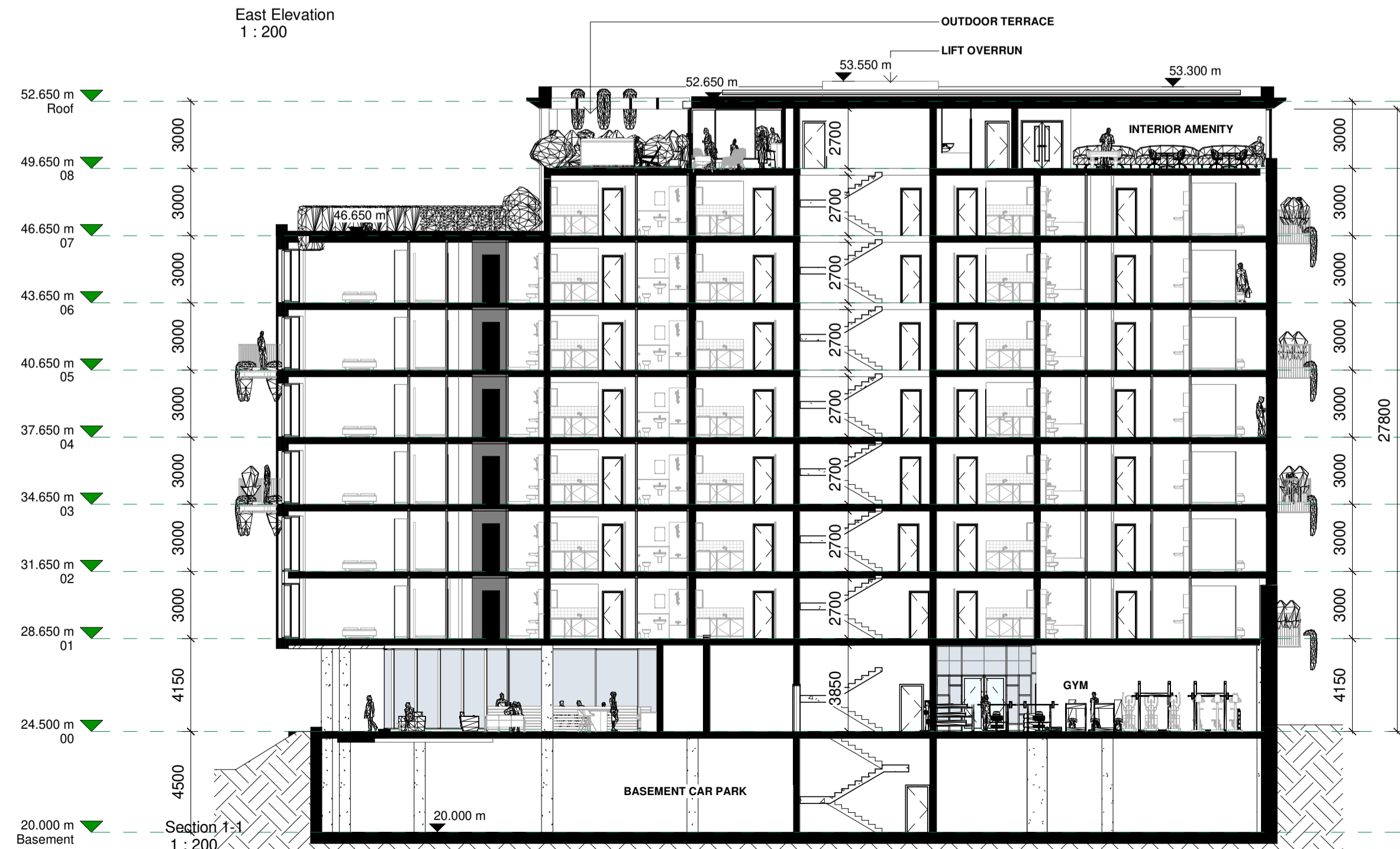
# BLOCK E



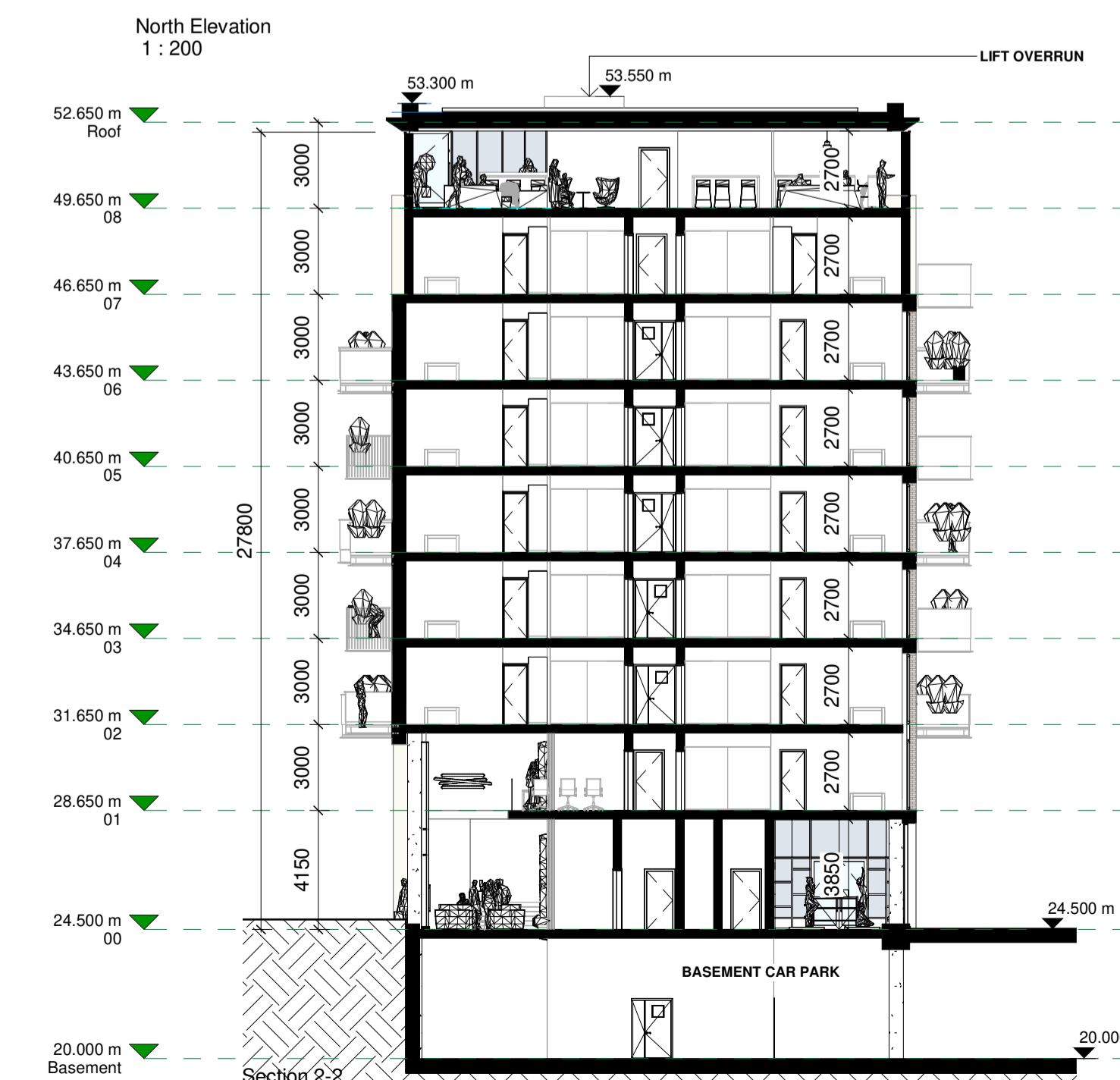
West Elevation  
1 : 200



North Elevation  
1 : 200

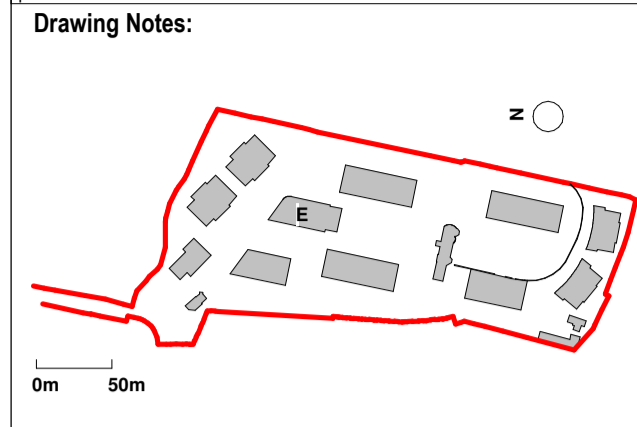


Section 1-1  
1 : 200

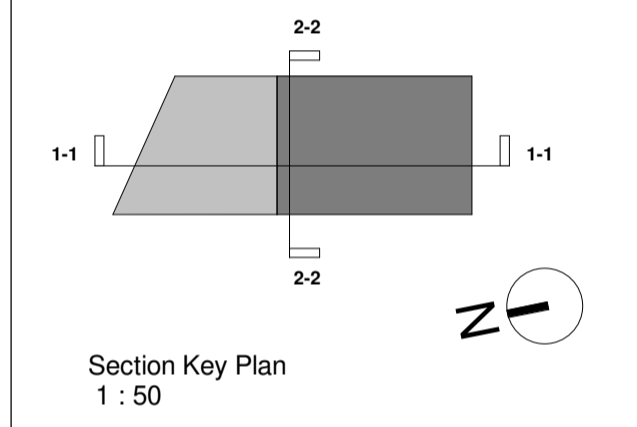


Section 2-2  
1 : 200

**Notes:**  
 - Do not scale from this drawing. Use figured dimensions in all cases.  
 - Verify dimensions on site and report any discrepancies to the Architect immediately.  
 - This drawing is to be read in conjunction with the Architect's Specification.  
 - © This drawing is copyright and may only be reproduced with the Architect's permission.



1. Selected Oat Brick
2. Aluminium Windows
3. Metal Panels (Colour RAC TBC)
4. Selected Render
5. Ventilated Grills
6. Glass Balcony
7. Powder Coated Metal Balcony
8. Selected Stone
9. Selected Glazing
10. Light Render Panel



- REVISIONS**
- E1. Double Height Entrance Foyer, Mezzanine Floor with bookable rooms added.
  - E2. Glazing brought up extra level to first floor.
  - E3. Glass Shadow gap location and size revised.
  - E4. Tonal change at Penthouse Level and spandrel panels / balconies
  - E5. Steps to north of Block E omitted.
  - E6. Balcony positions altered from previous submission.
  - E7. Secure Bicycle Storage added and car parking re-configured.

P02	19/05/23	Response to RFI	
P01	29/04/22	Issued For Planning	
Revision Number	Date	Drawn	Details of Issue / Revision
Issues & Revisions			



**Client Details:**  
 GEDV Monkstown Owner Limited, 3rd Floor  
 Kilmore House, Park Lane, Spencer Dock,  
 Dublin 1.

**Project Details:**  
 Dalgise  
 Monkstown

**Drawing Title:**  
 Proposed Elevations + Section - Block E

Job No.	Sheet Size	Scale @A1:
P21-066D	A1_	1:200
Issue Date:	Drawn By:	Reviewed By:
24/10/2022	MG	EOB

Status	Purpose of Issue	Revision
P01	PLANNING PERMISSION	
MKS-RAU-E-ZZ-DR-AR-200		P02