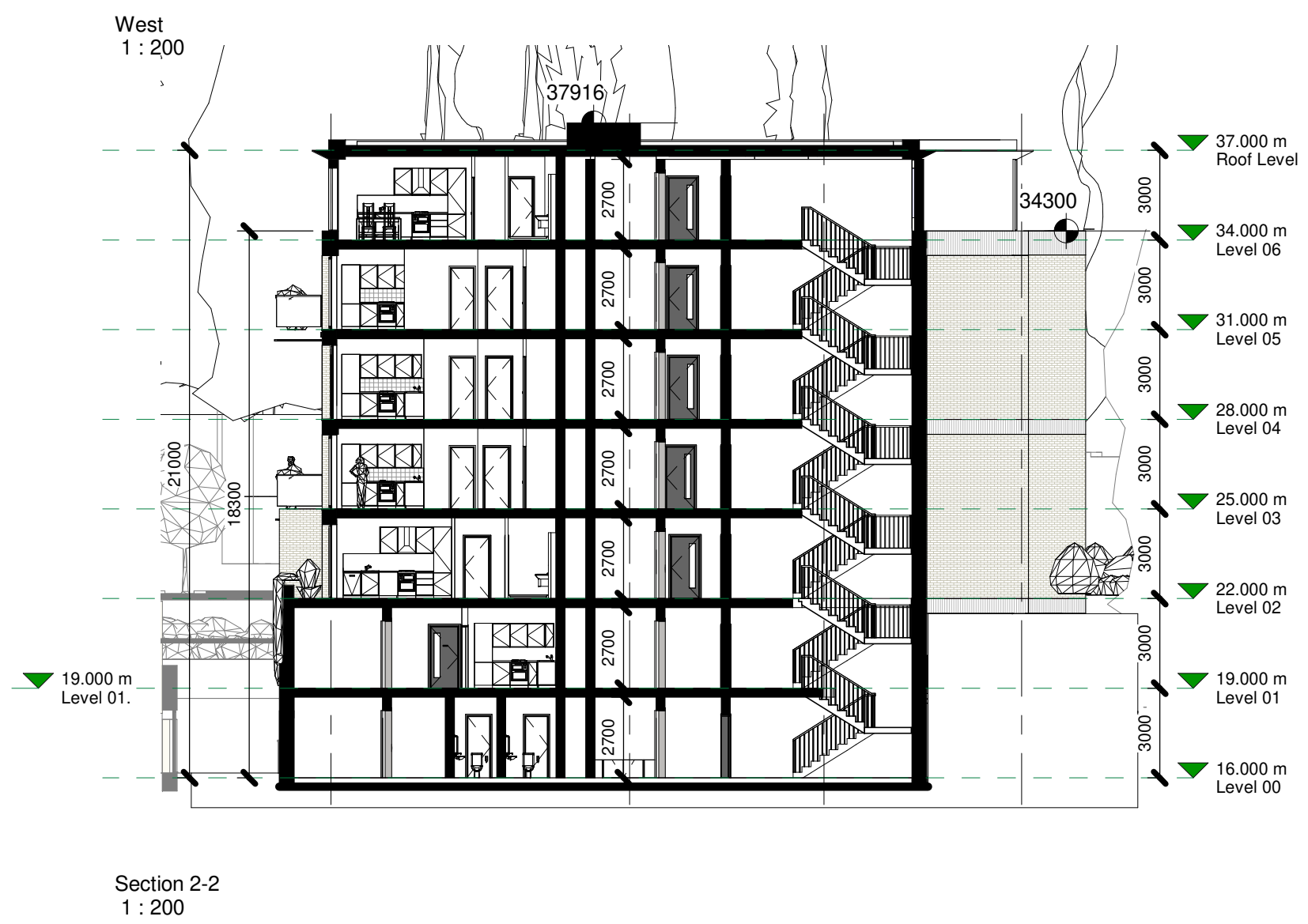
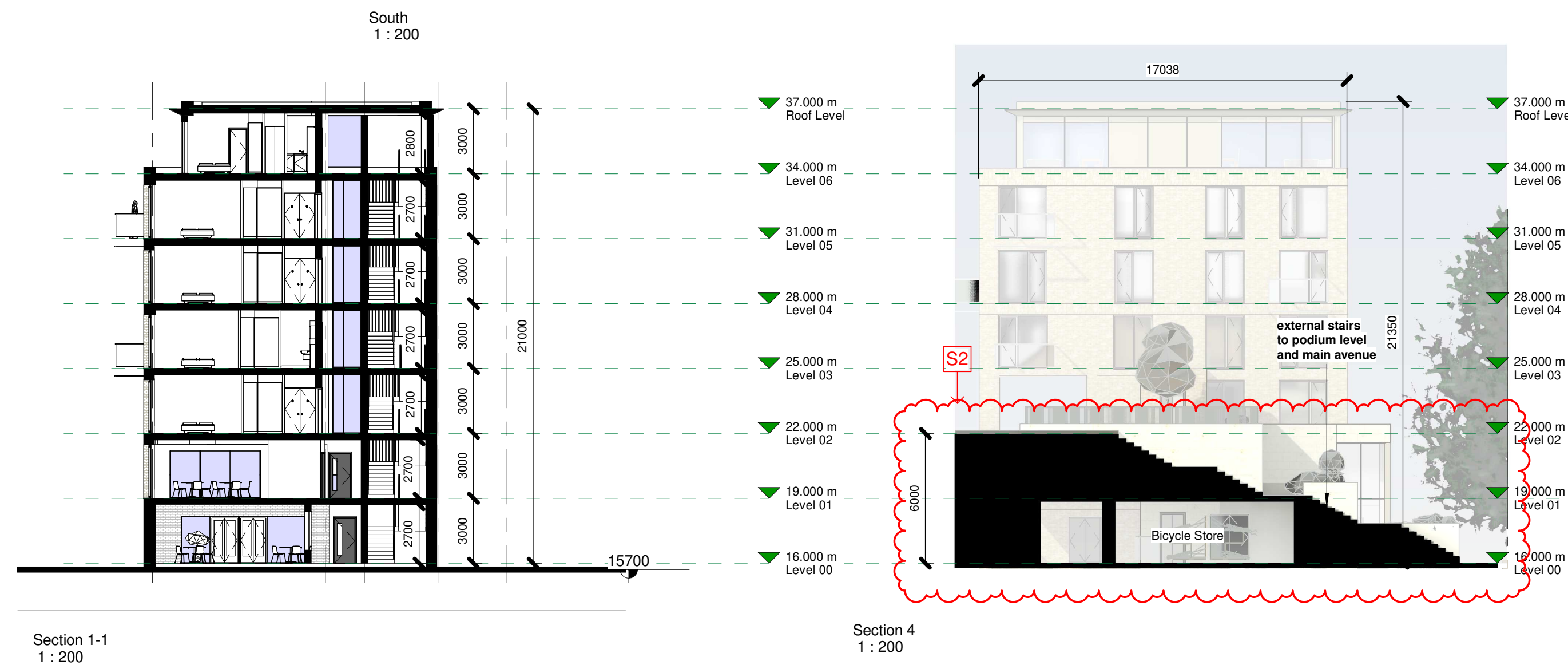
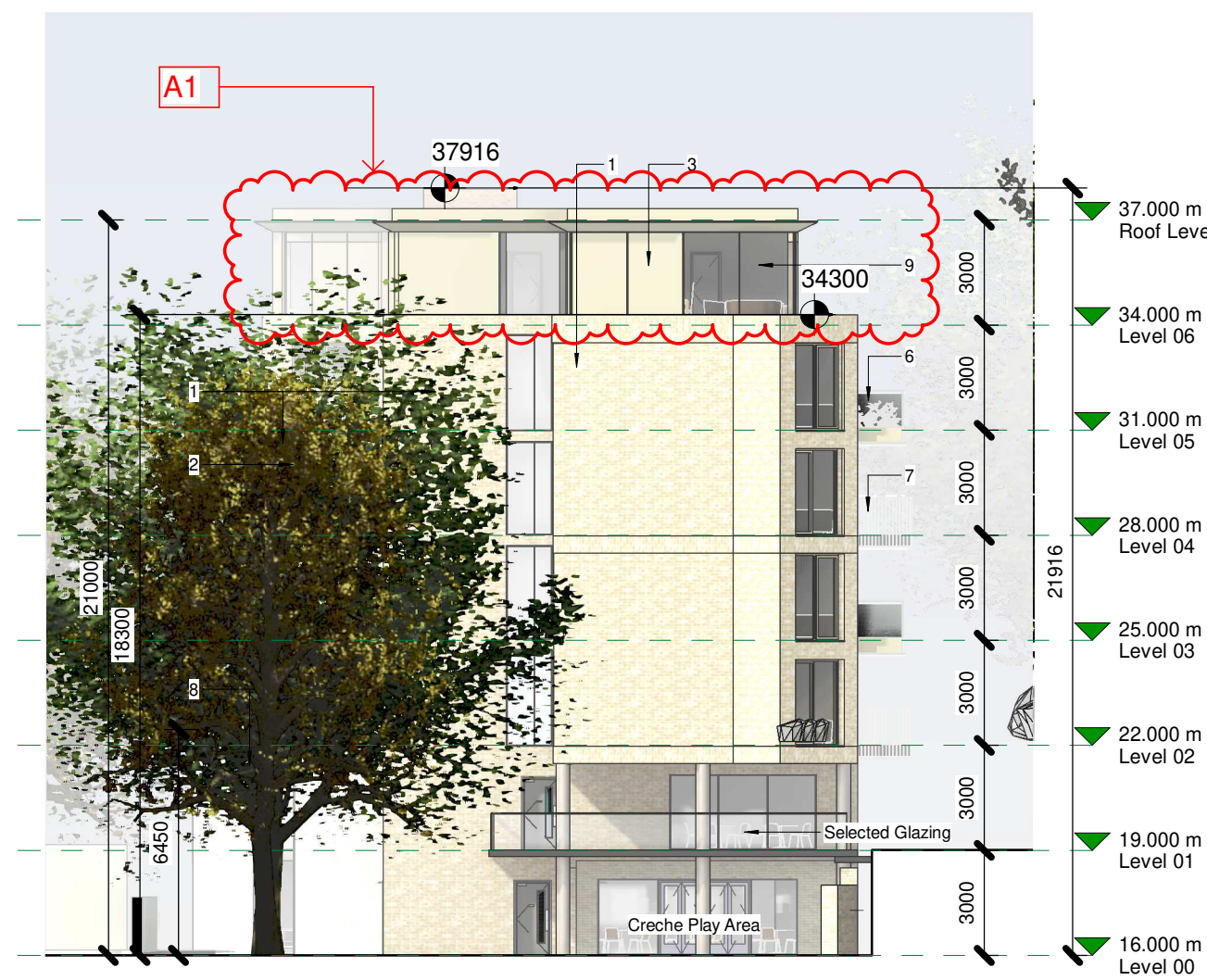
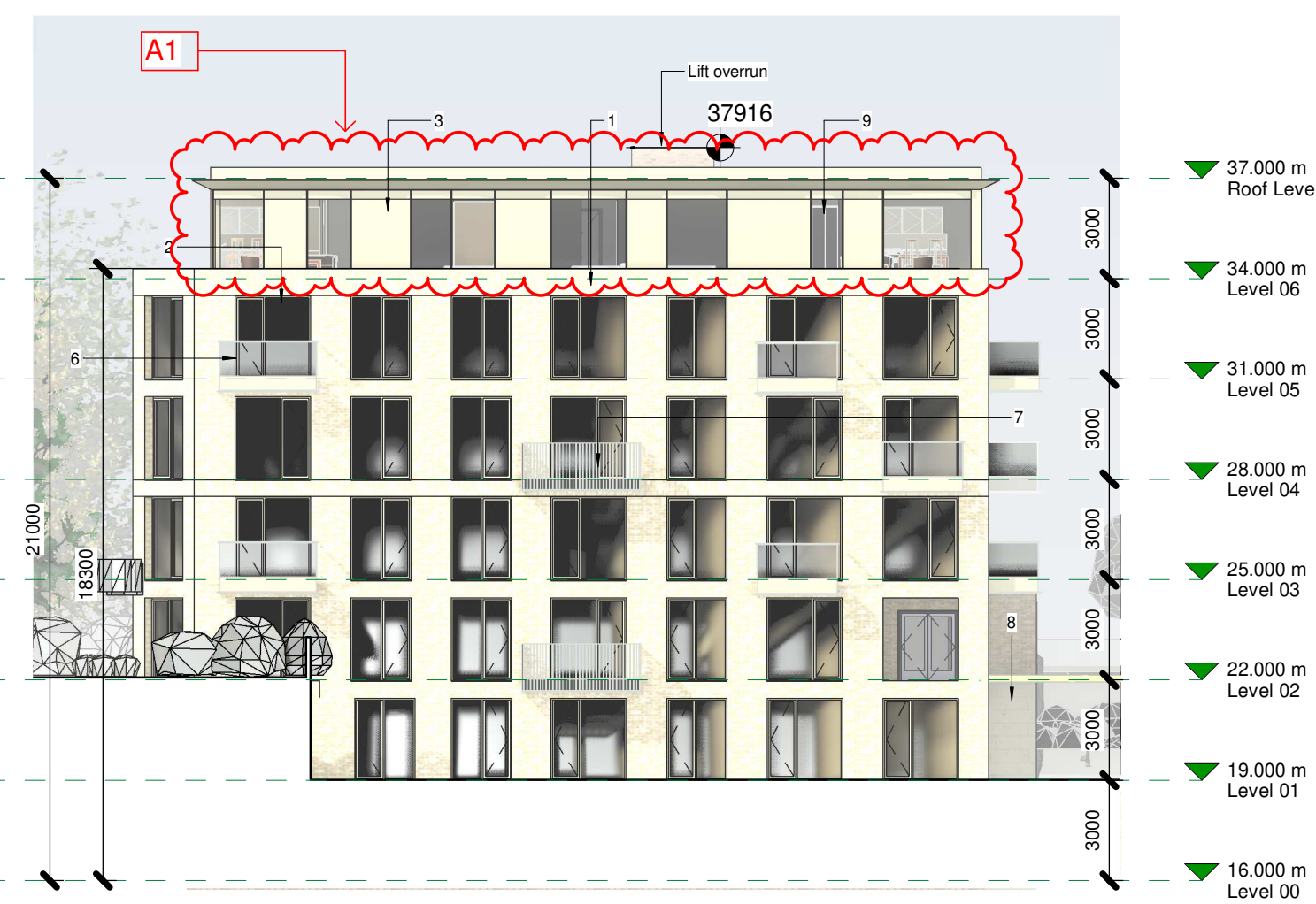
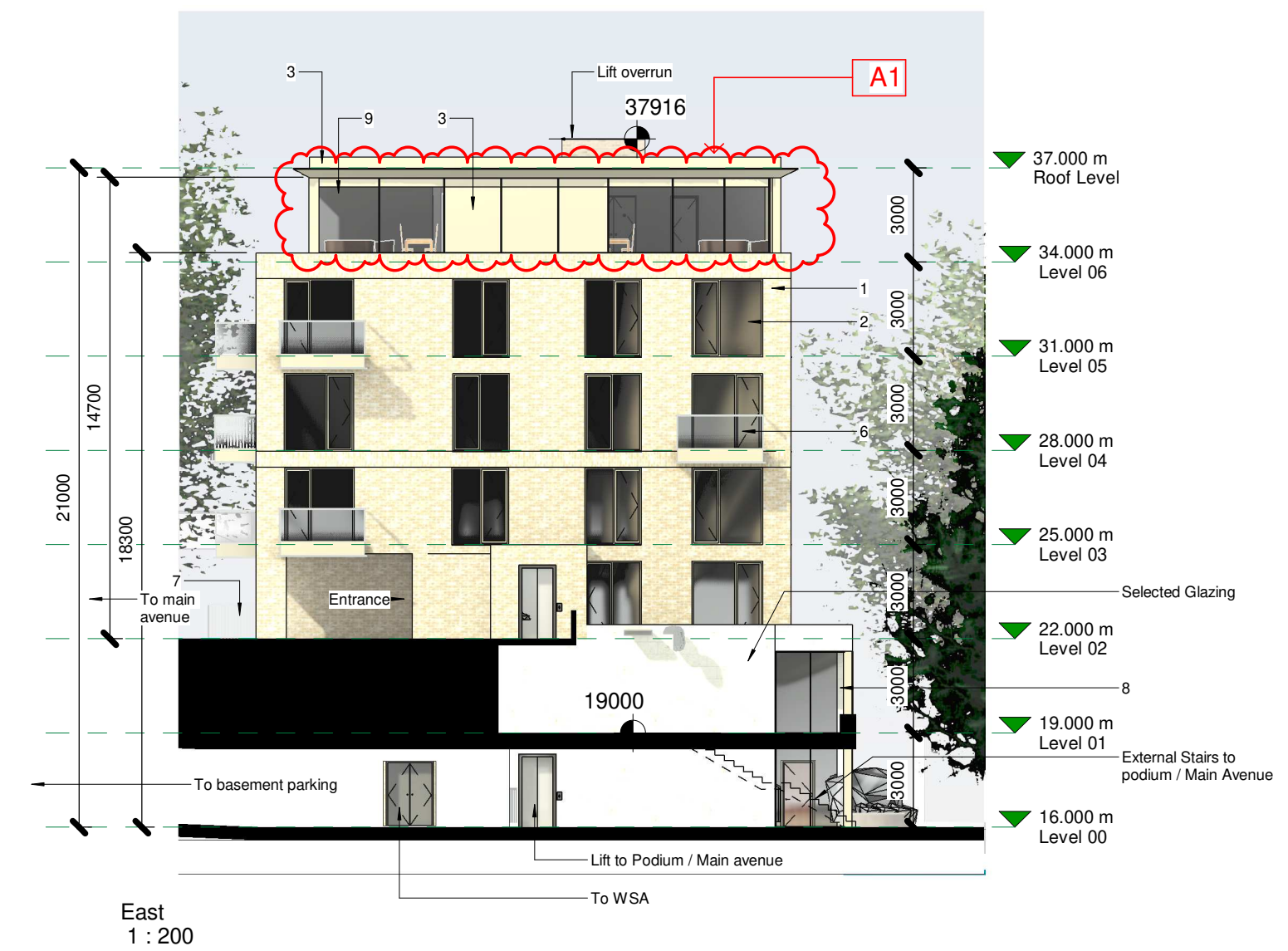
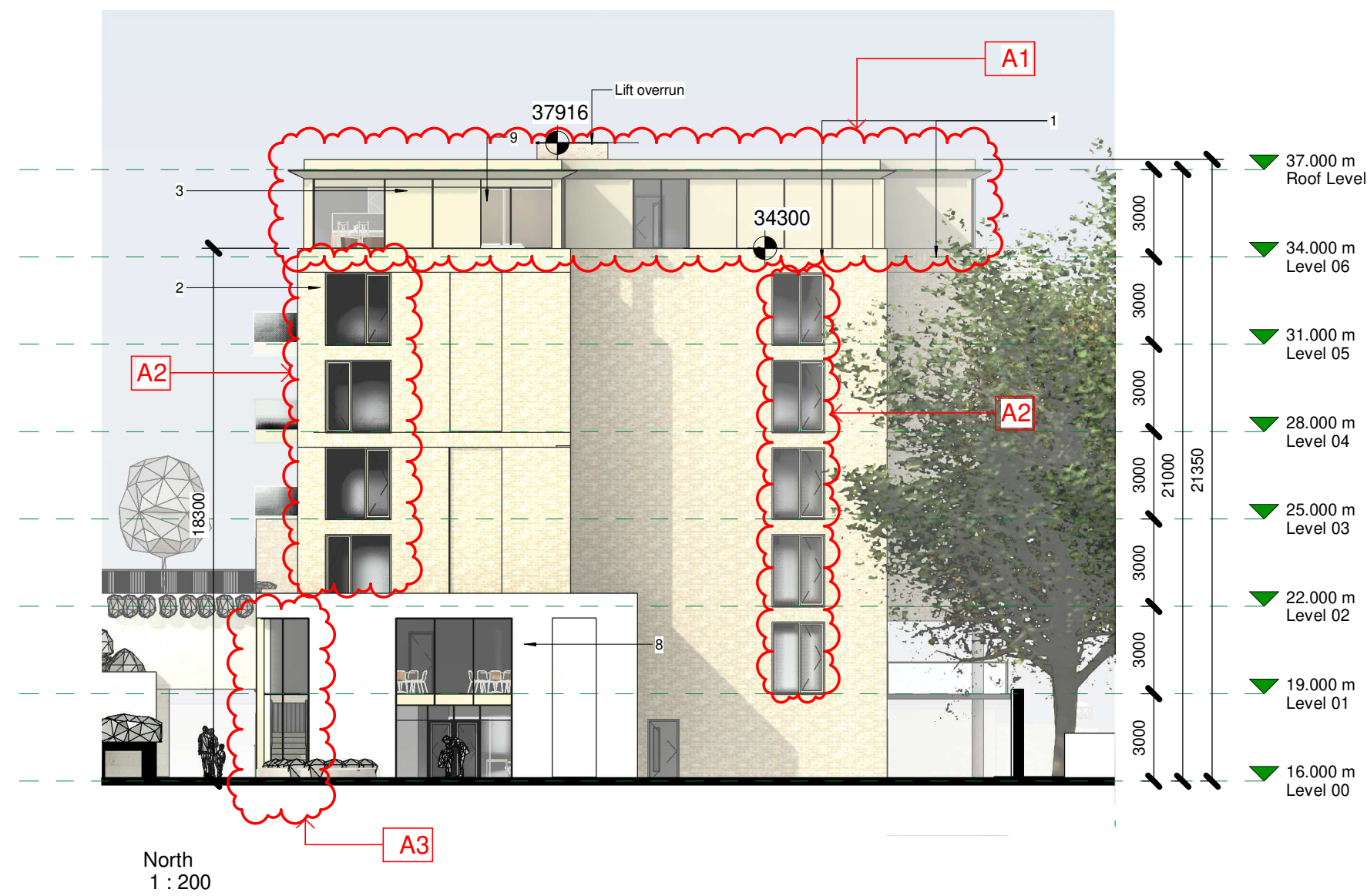
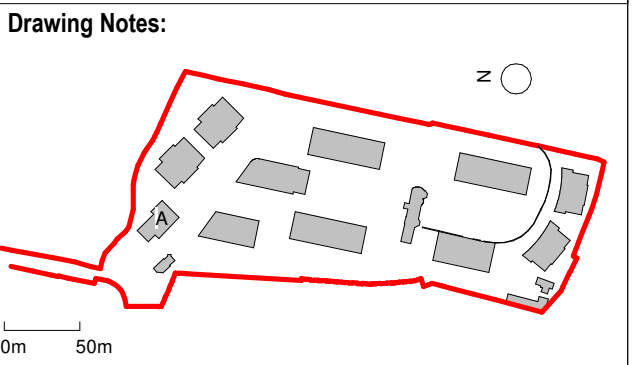


BLOCK A Elevations/Sections



Notes:
- Do not scale from this drawing. Use figured dimensions in all cases.
- Verify dimensions on site and report any discrepancies to the Architect immediately.
- This drawing is to be read in conjunction with the Architect's Specification.
- © This drawing is copyright and may only be reproduced with the Architect's permission.

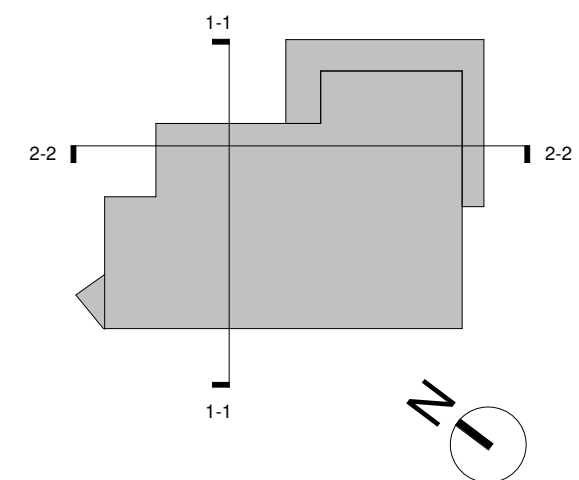


- Indicates Site Boundary
Site Area within Boundary = 35767.1 m²
- Indicates Right of Way Boundary and Area
- ▲ Site Access
- ▲ Building Access

1. Selected Oat Brick
2. Selected Windows
3. Metal Panels (Colour RAL TBC)
4. Selected Render
5. Ventilated Grills
6. Glass Balcony
7. Powder Coated Metal Balcony
8. Selected Stone
9. Selected Glazing

- REVISIONS**
- A1. Tonal Change at Penthouse level.
 - A2. Double height windows changed to single height.
 - A3. Minor alterations to creche layout / elevations.

- S2. Re-alignment of the Basement Car Park Entrance. The Entrance is now located underneath Block B.



P02	19/05/23	Response to RFI	
P01	29/04/22	Issued for Planning	
Revision Number	Date	Drawn	Details of Issue / Revision
Issues & Revisions			



Client Details:
GEDV Monkstown Owner Limited, 3rd Floor
Kilmore House, Park Lane, Spencer Dock,
Dublin 1.

Project Details:
Dalgise
Monkstown

Drawing Title:
Proposed Elevations + Sections - Block A

Job No.	Sheet Size	Scale @A1:
P21-066D	A1_	1:200
Issue Date:	Drawn By:	Reviewed By:
24/10/2022	MG	EOB

Status	Purpose of Issue
P01	PLANNING PERMISSION

MKS-RAU-A-ZZ-DR-AR-200	Revision
	P02