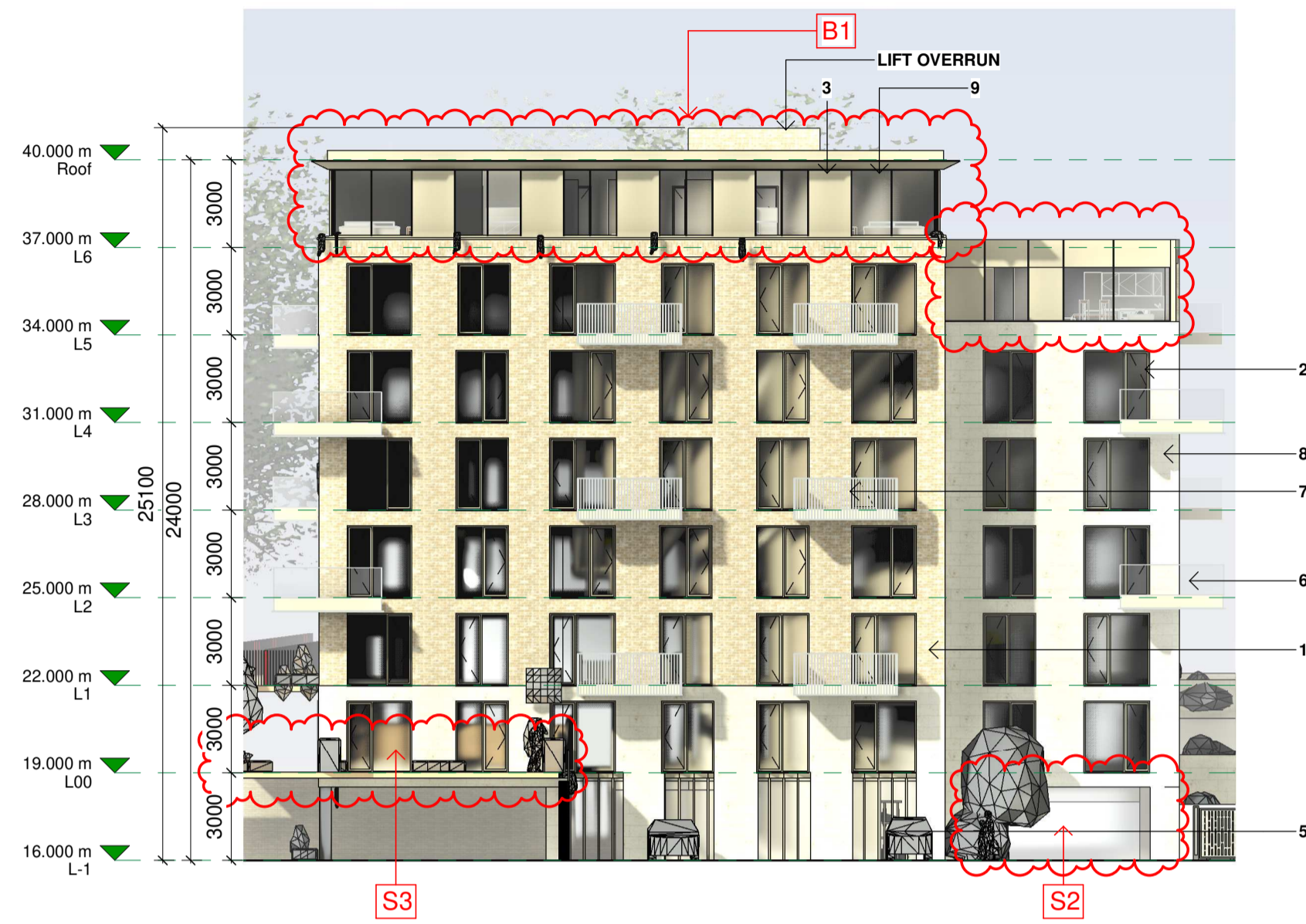
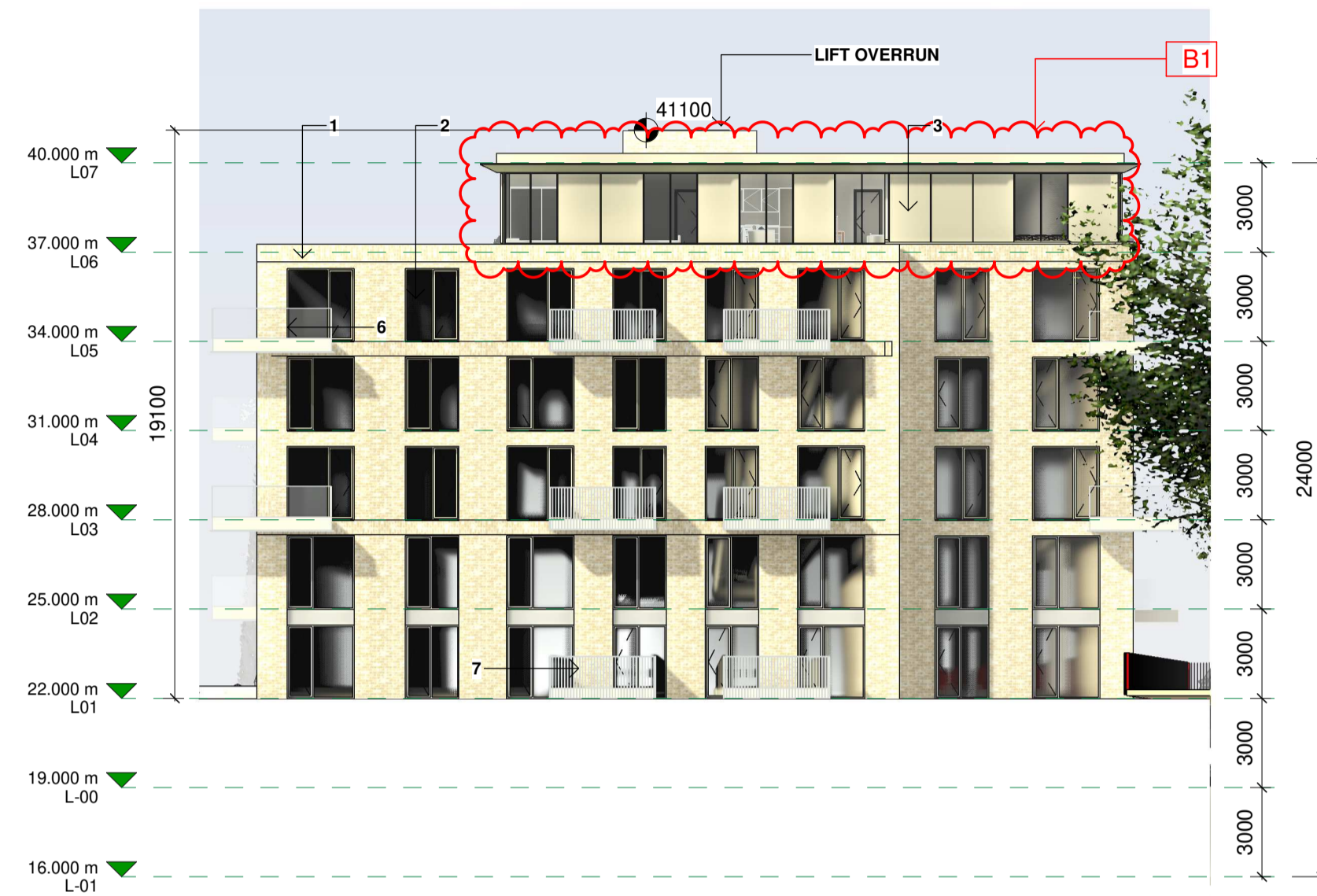


BLOCK B

Elevations/Sections



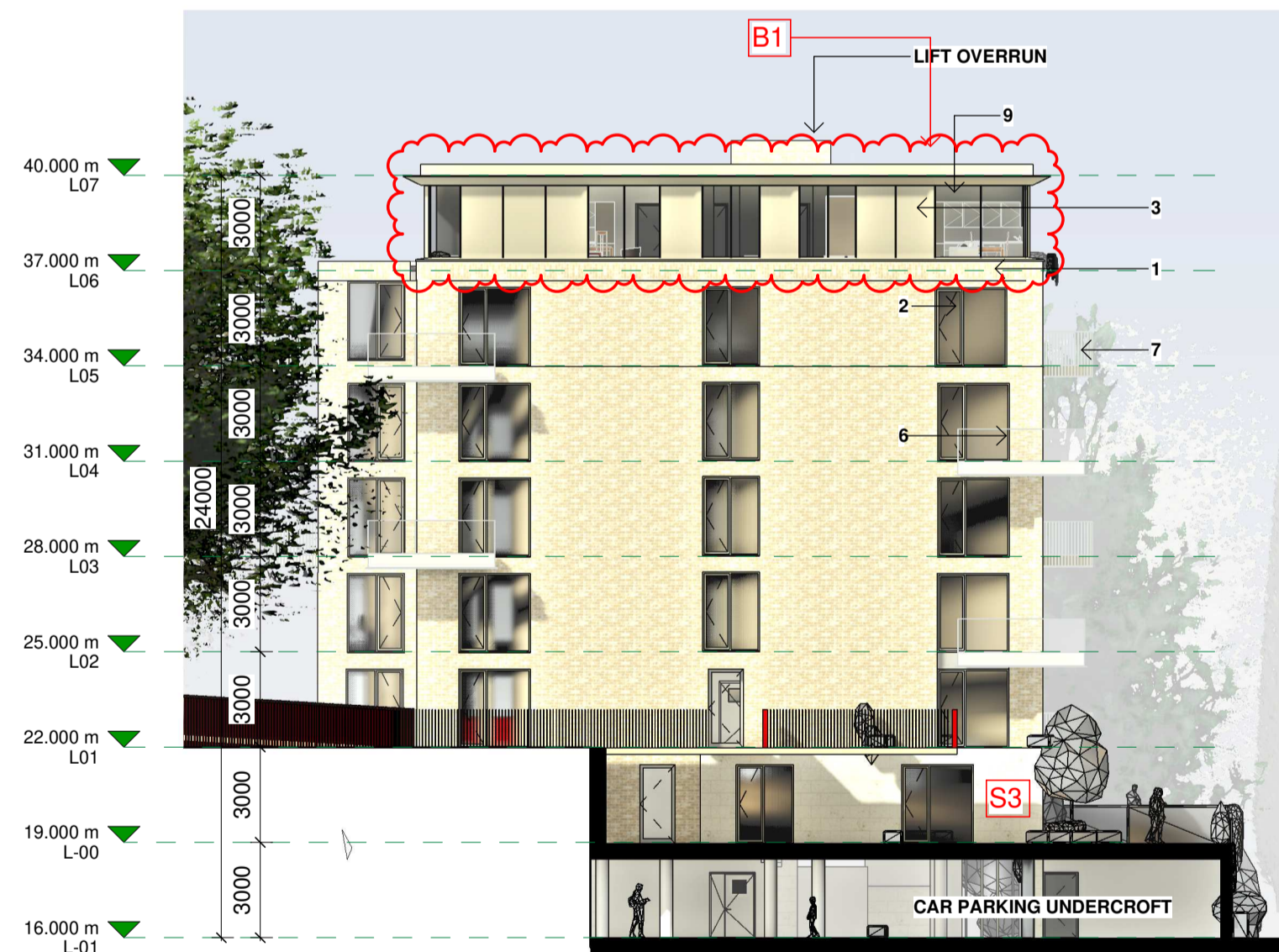
North West Elevation
1 : 200



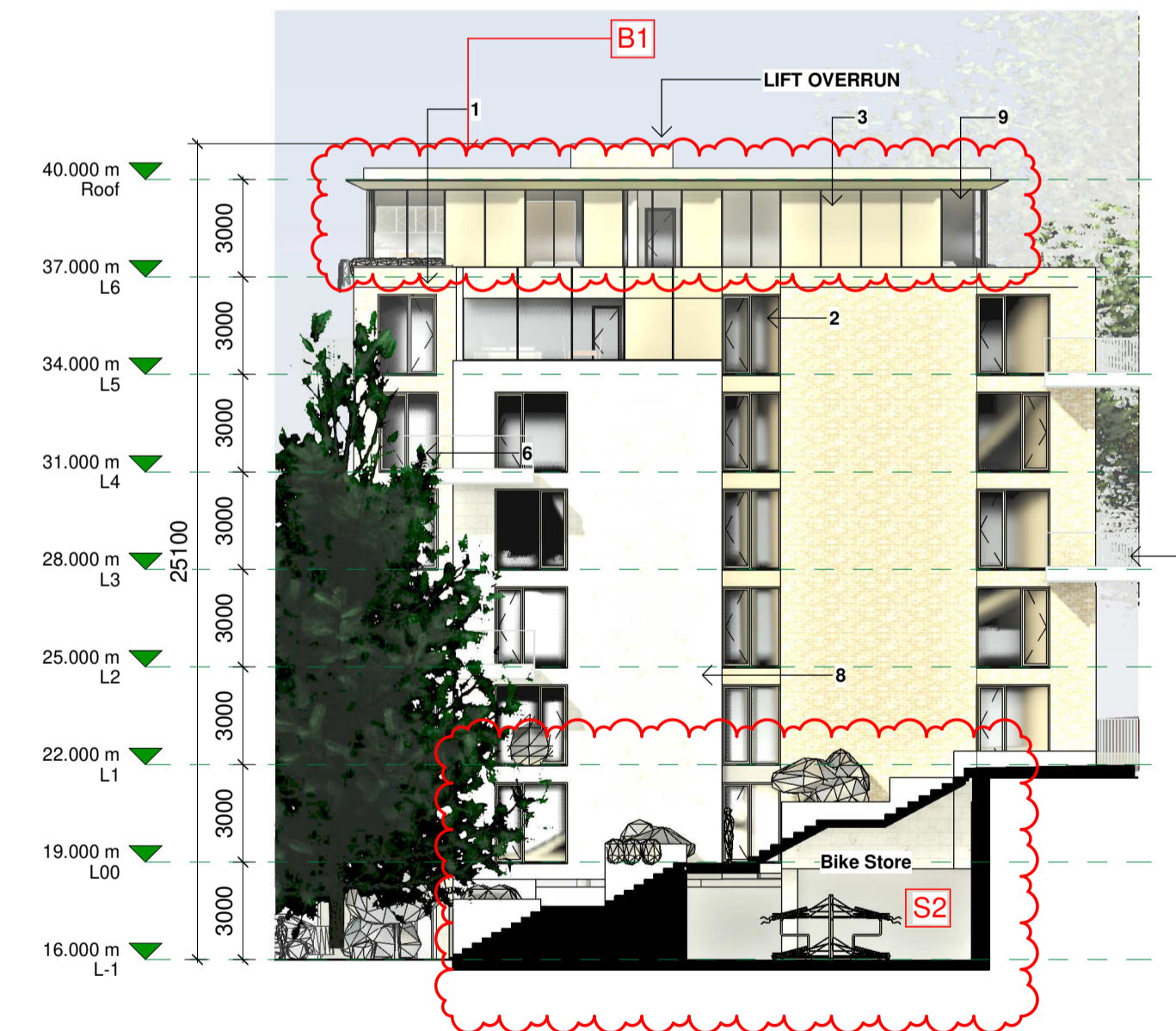
South East Elevation
1 : 200



Section 1
1 : 200



North East Elevation
1 : 200

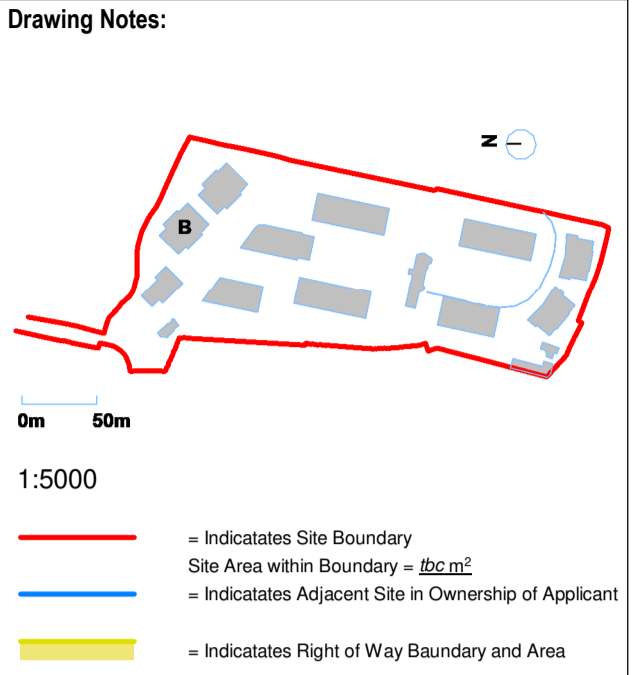


South West Elevation
1 : 200



Section 2
1 : 200

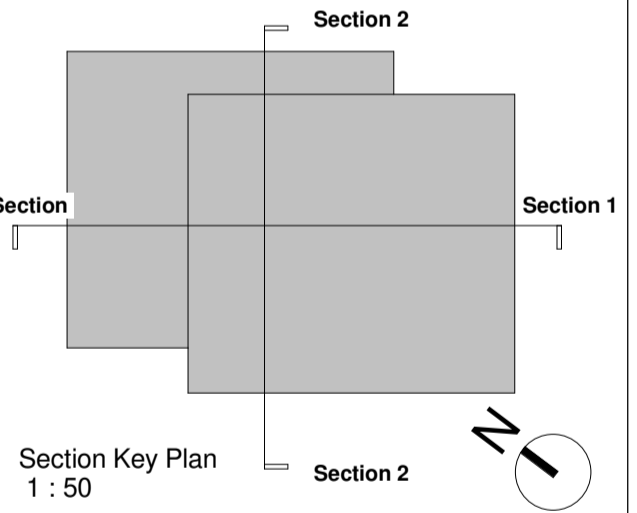
Notes:
 - Do not scale from this drawing. Use figured dimensions in all cases.
 - Verify dimensions on site and report any discrepancies to the Architect immediately.
 - This drawing is to be read in conjunction with the Architect's Specification.
 - © This drawing is copyright and may only be reproduced with the Architect's permission.



1. Selected Oat Brick
2. Selected Windows
3. Metal Panels (Colour RAL TBC)
4. Selected Render
5. Ventilated Grills
6. Glass Balcony
7. Powder Coated Metal Balcony
8. Selected Stone
9. Selected Glazing

REVISIONS

- B1. Tonal Change at Penthouse level.**
- S2. Re-alignment of the Basement Car Park Entrance. The Entrance is now located underneath Block B.**
- S3. New external Amenity space added ground floor between Block B+C (Refer to HQA for area)**
- B4. New private balcony added to B_00_01 (Refer to HQA for area)**



P02	19/05/23	Response to RFI
P01	25/04/22	Issued For Planning
Revision Number	Date	Drawn / Details of Issue / Revision
Issues & Revisions		



Client Details:
**GEDV Monkstown Owner Limited, 3rd Floor
 Kilmore House, Park Lane, Spencer Dock, Dublin 1.**

Project Details:
**Dalguise
 Monkstown**

Drawing Title:
Proposed Elevations + Sections - Block B

Job No. P21-066D	Sheet Size: A1_	Scale @A1: 1:200
Issue Date: 24/10/2022	Drawn By: MG	Reviewed By: EOB

Status	Purpose of Issue	Revision
P01	PLANNING PERMISSION	
		P02

MKS-RAU-B-ZZ-DR-AR-200