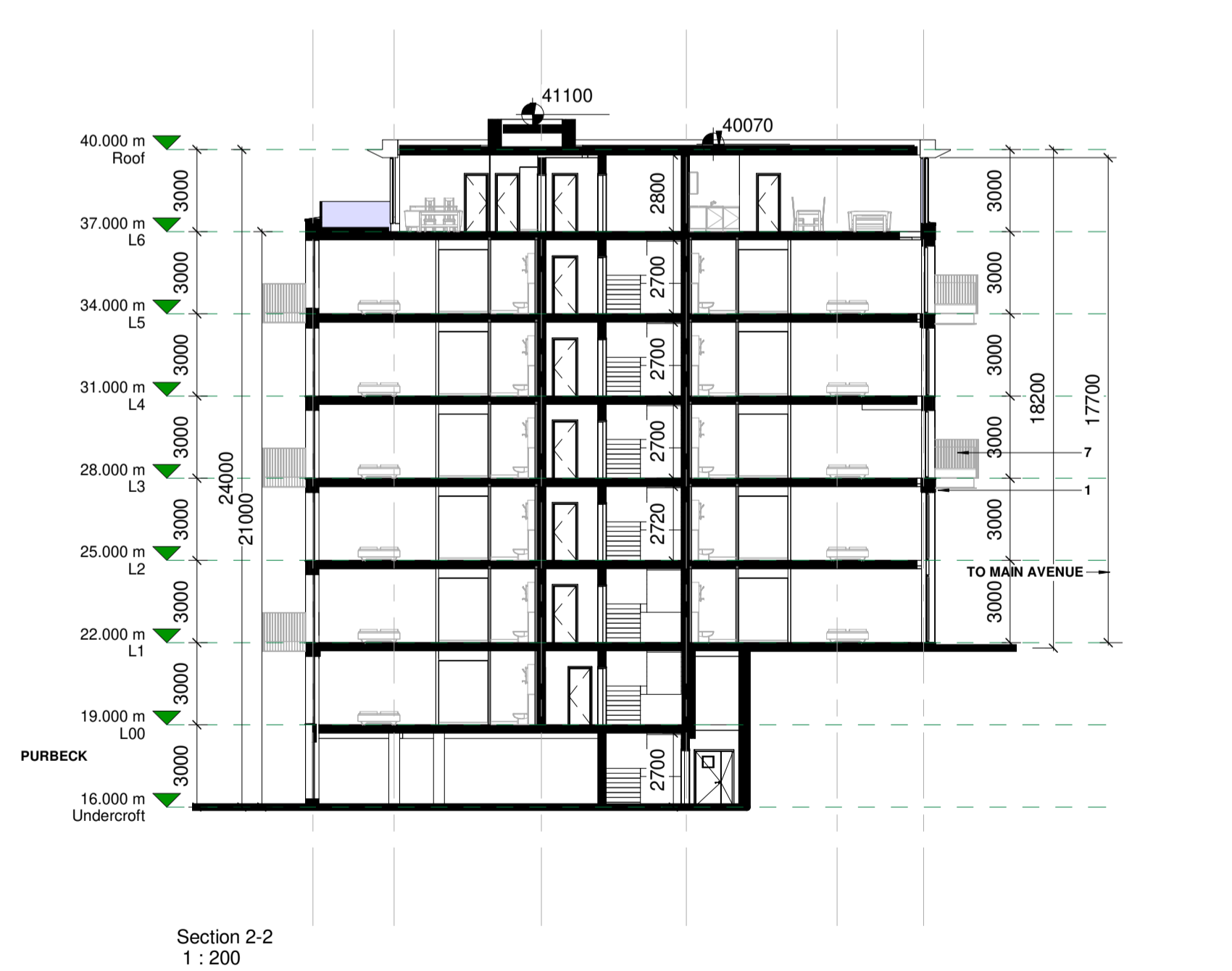
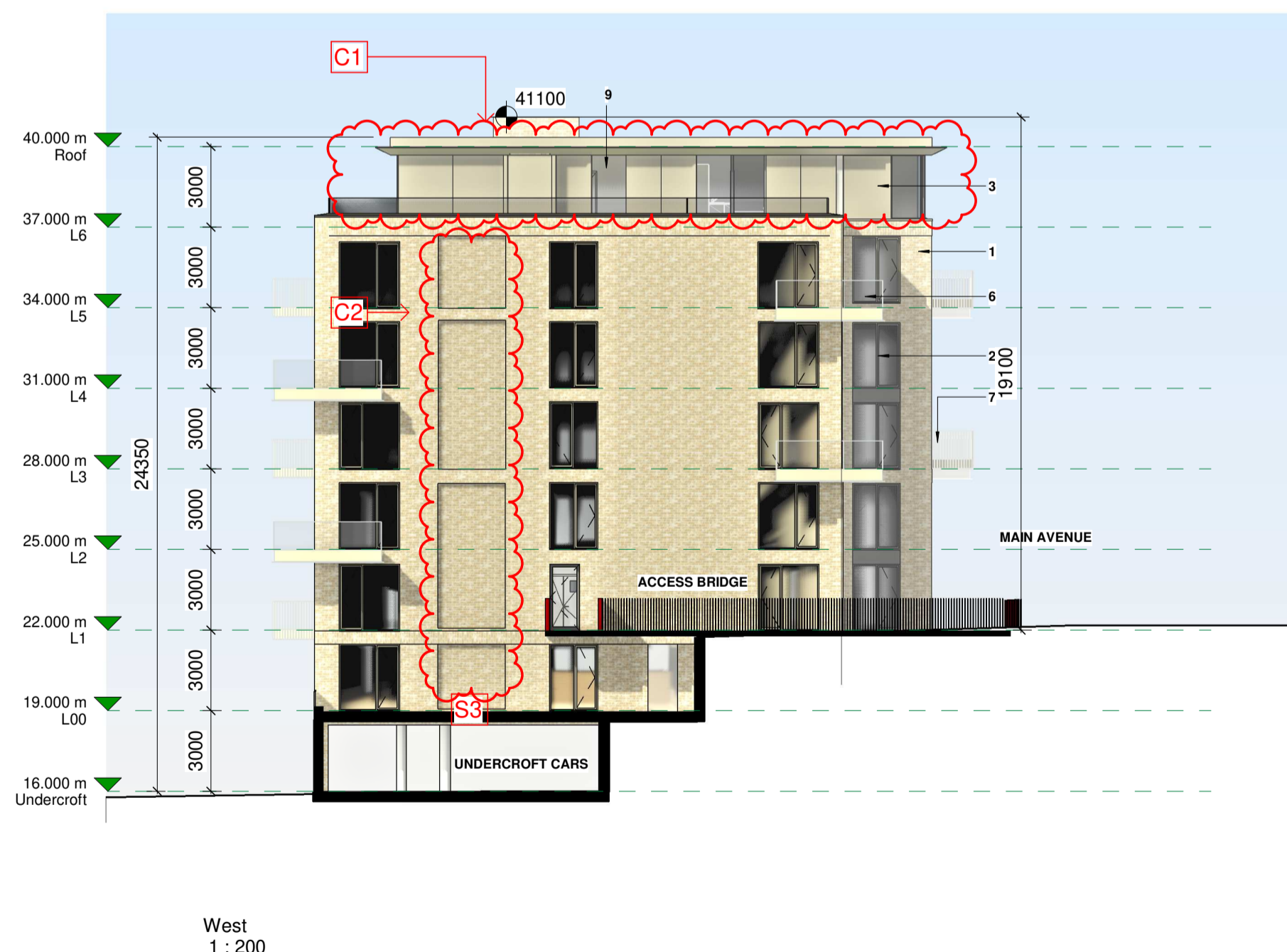
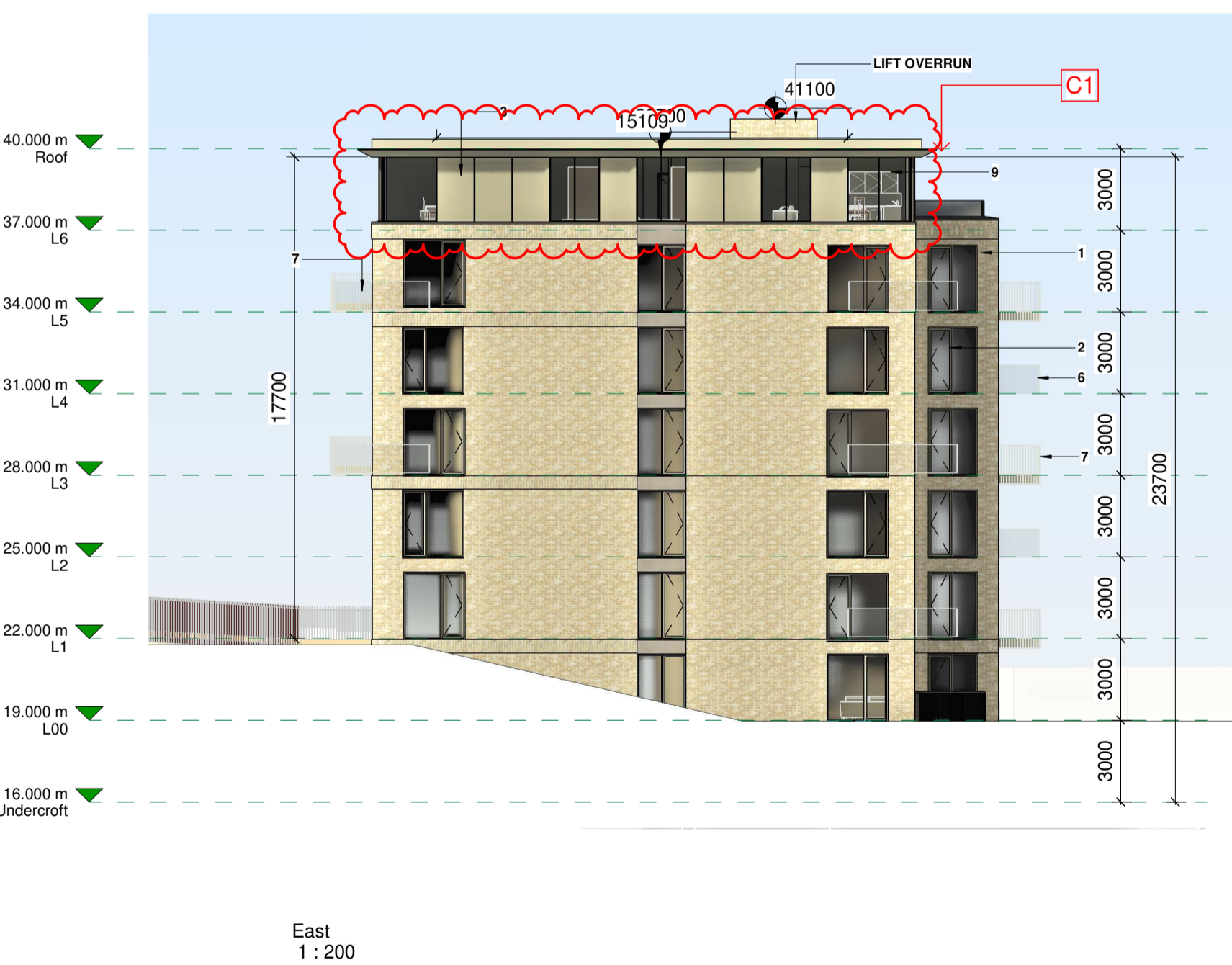
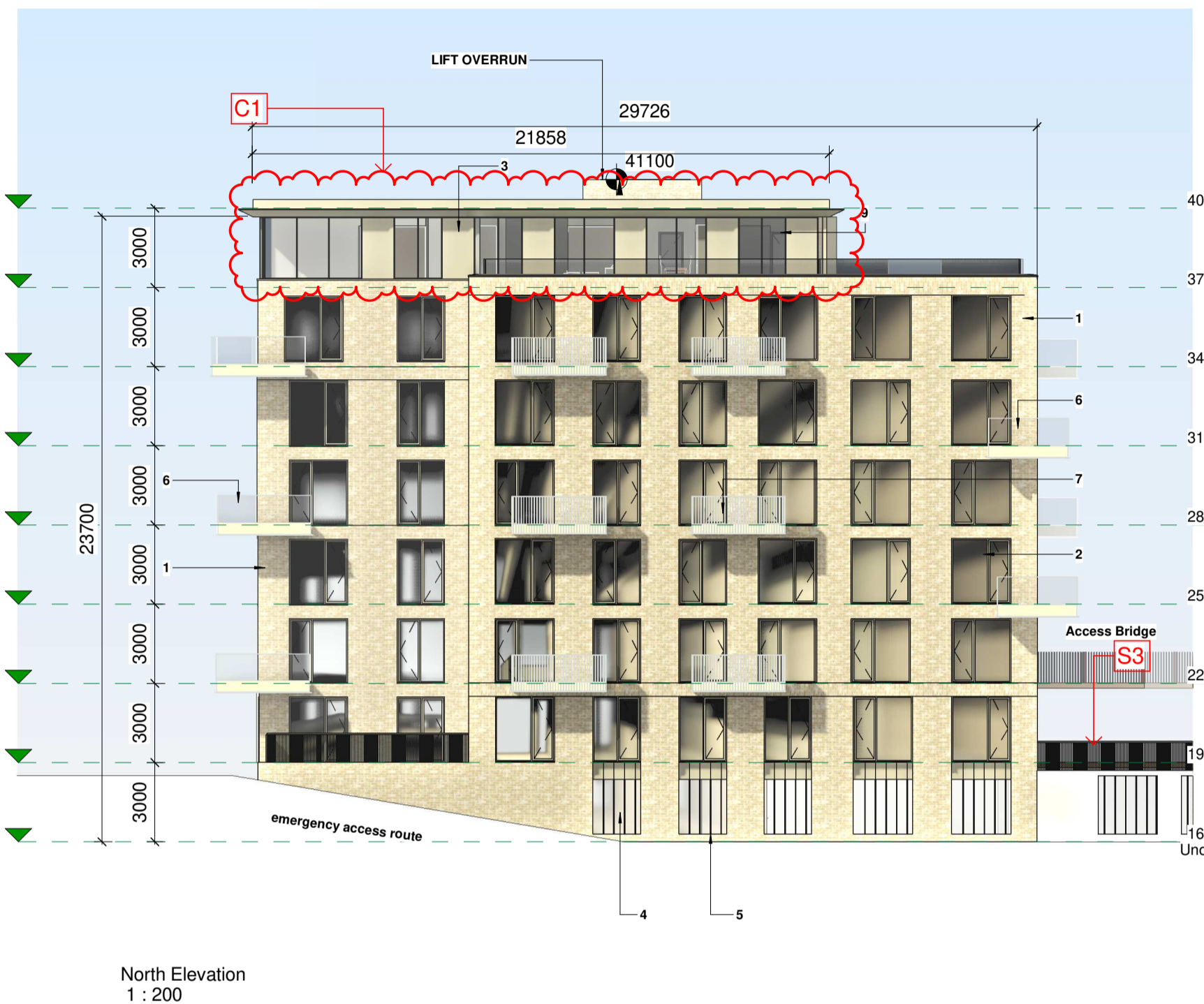
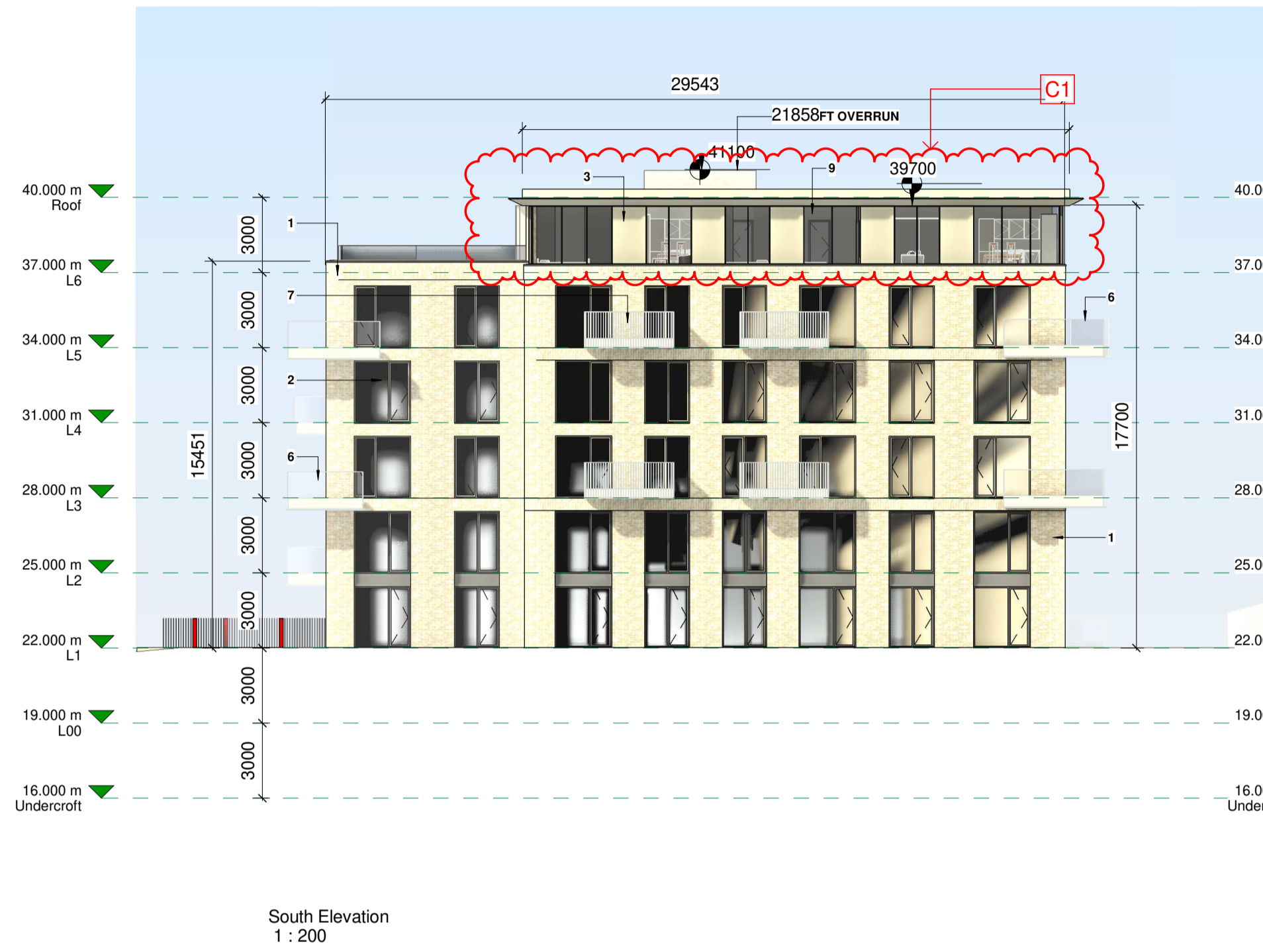


BLOCK C

Elevations / Sections



Notes:

- Do not scale from this drawing. Use figured dimensions in all cases.
- Verify dimensions on site and report any discrepancies to the Architect immediately.
- This drawing is to be read in conjunction with the Architect's Specification.
- © This drawing is copyright and may only be reproduced with the Architect's permission.

Drawing Notes:

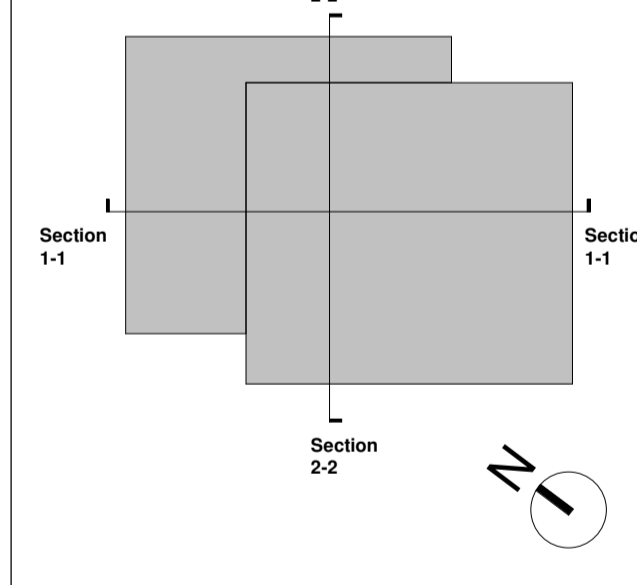
- Indicates Extent of Application
- Site Area within Application = 352927.7m²
- Indicates Adjacent Site in Ownership of Applicant
- Wayleave

0m 50m
1:5000

Site Access

1. Selected Oat Brick
2. Selected Windows
3. Metal Panels (Colour RAL TBC)
4. Selected Render
5. Ventilated Grills
6. Glass Balcony
7. Powder Coated Metal Balcony
8. Selected Stone
9. Selected Glazing

- REVISIONS**
- C1. Tonal change at penthouse level.
 - C2. Brick indent detail added to facade
 - S3. New external amenity space added ground floor between Block B+C.
 - B3. Access route to new amenity space added at Ground level (lwr)
 - B4. Private Balcony added to Apartments B_00_01 and C_00_01 (Refer to HOA for areas)



P02	19/05/23	Response to RFI	
P01	25/04/22	Issued For Planning	
Revision Number	Date	Drawn	Details of Issue / Revision
Issues & Revisions			



Client Details:
GEDV Monkstown Owner Limited, 3rd Floor
Kilmore House, Park Lane, Spencer Dock,
Dublin 1.

Project Details:
Dalgise
Monkstown

Drawing Title:
Proposed Elevations + Sections - Block C

Job No.	Sheet Size:	Scale @A1:
P21-066D	A1_	1:200
Issue Date:	Drawn By:	Reviewed By:
24/10/2022	MG	EOB

Status	Purpose of Issue	Revision
P01	PLANNING PERMISSION	
MKS-RAU-C-ZZ-DR-AR-200		P02