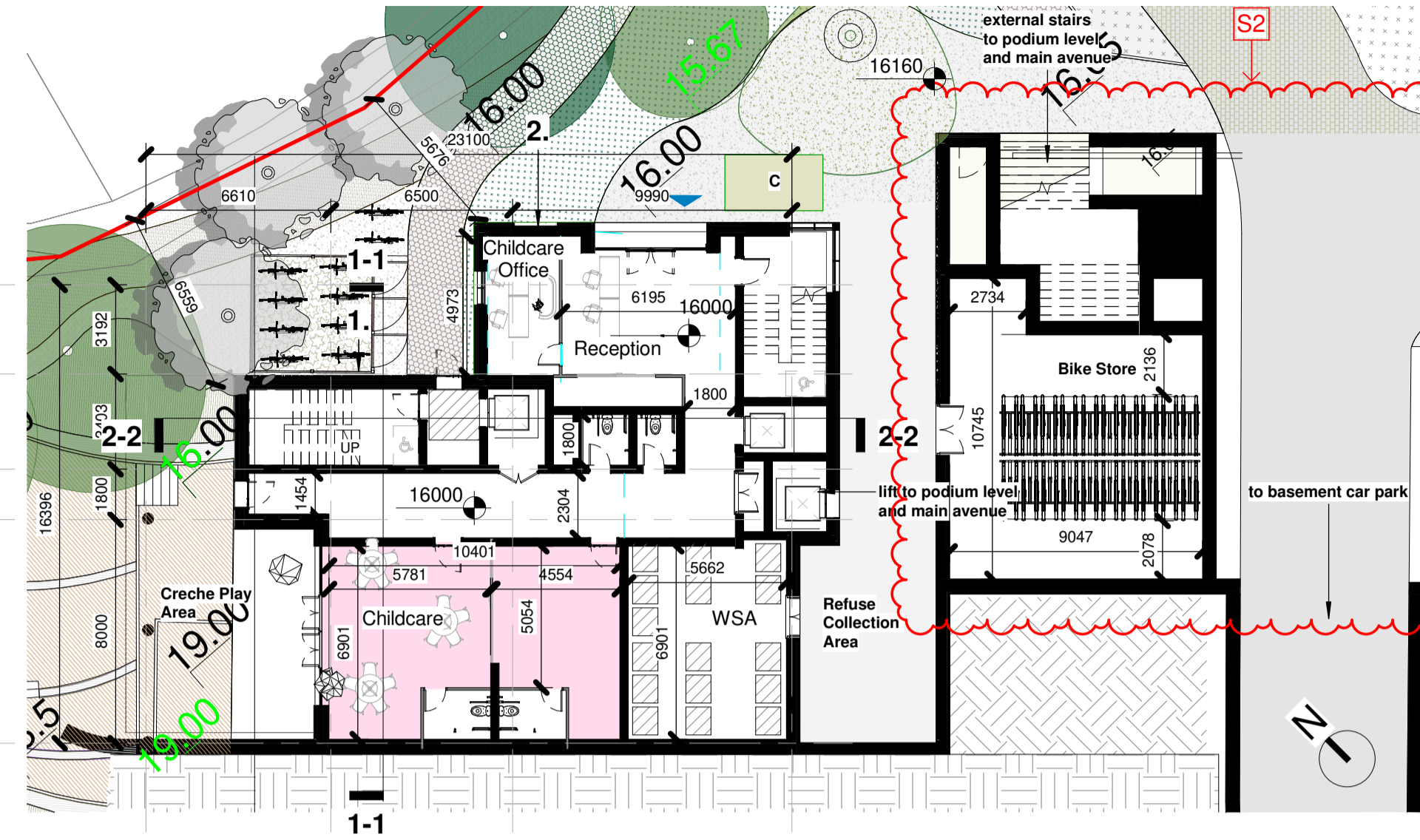
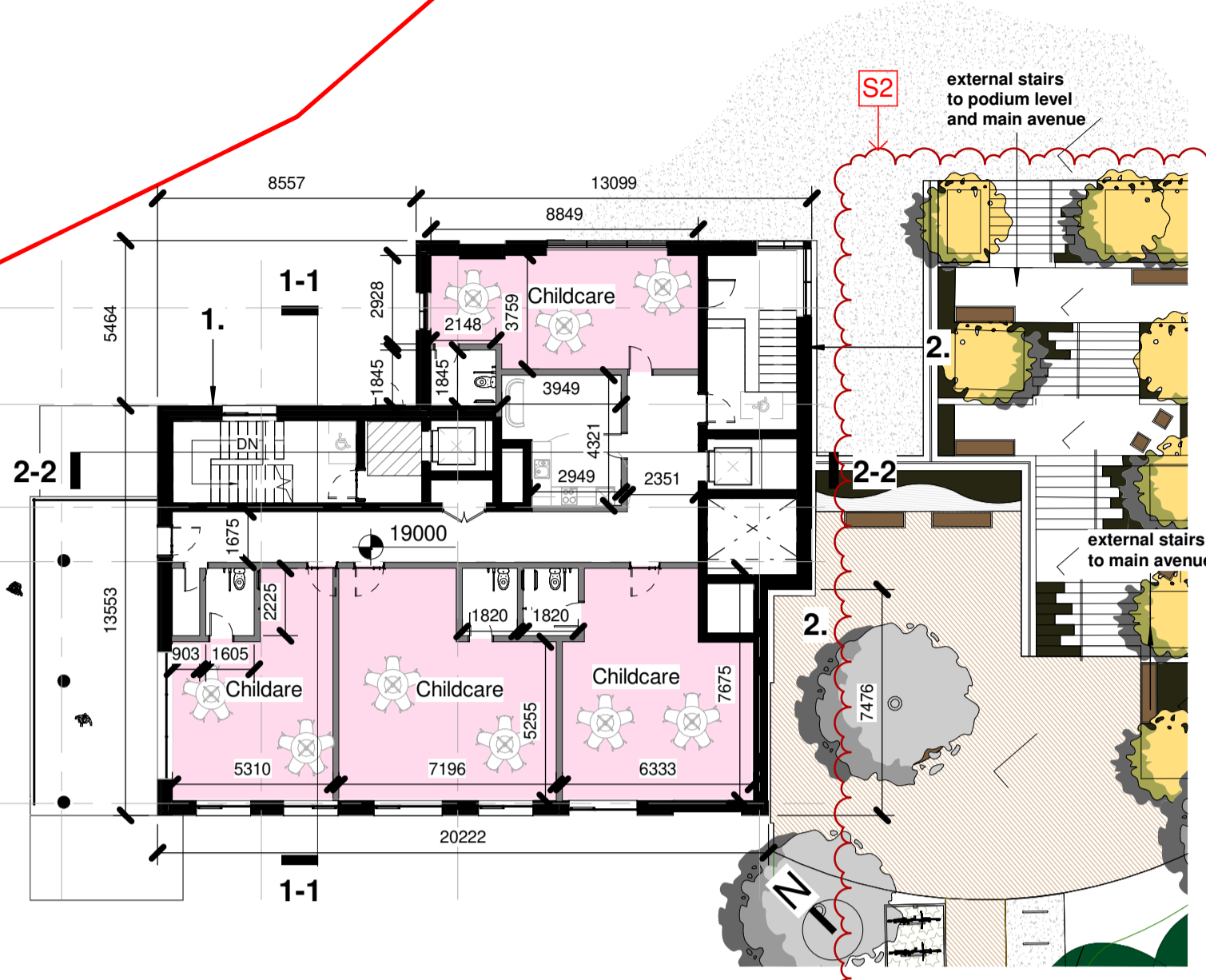


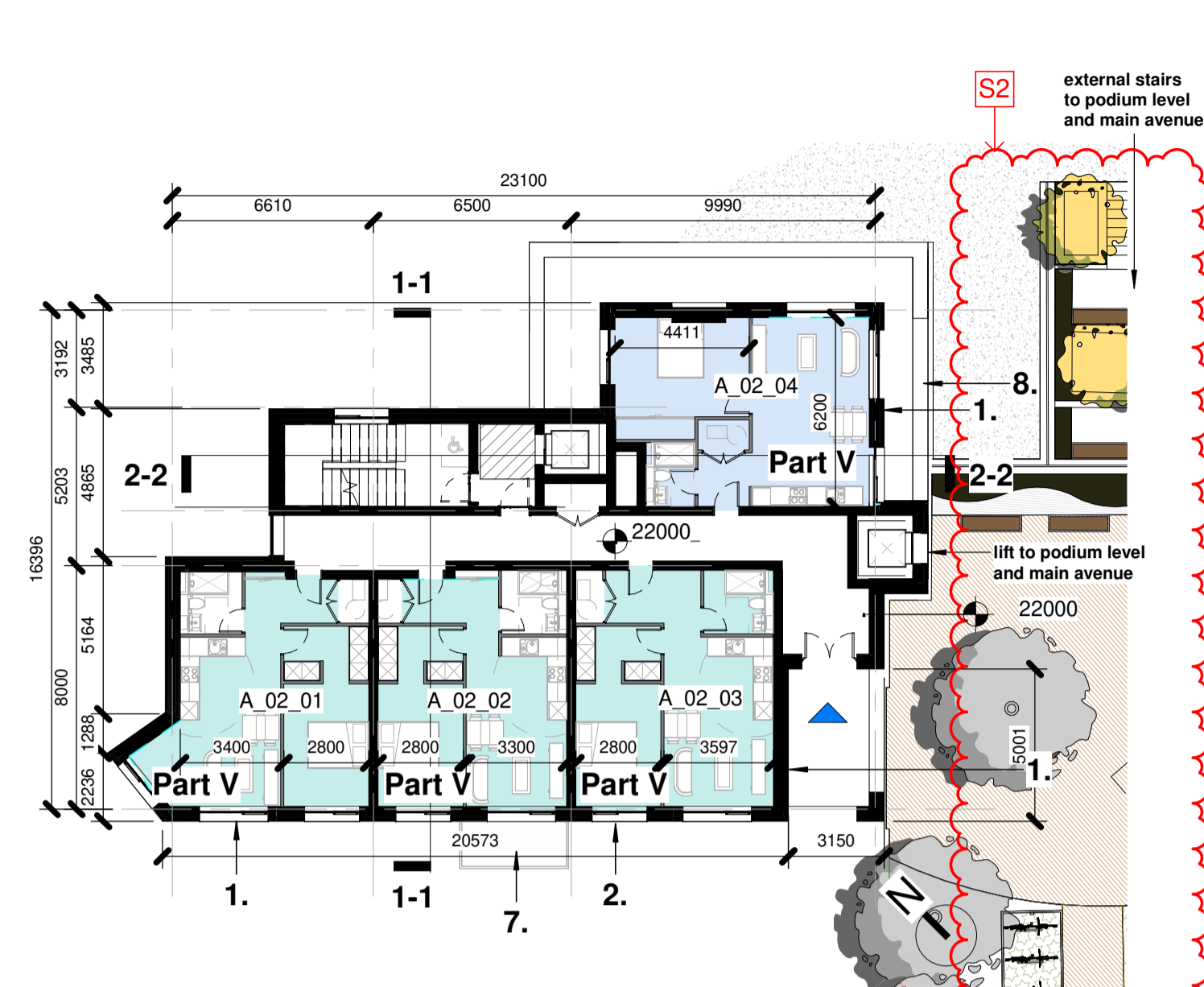
BLOCK A



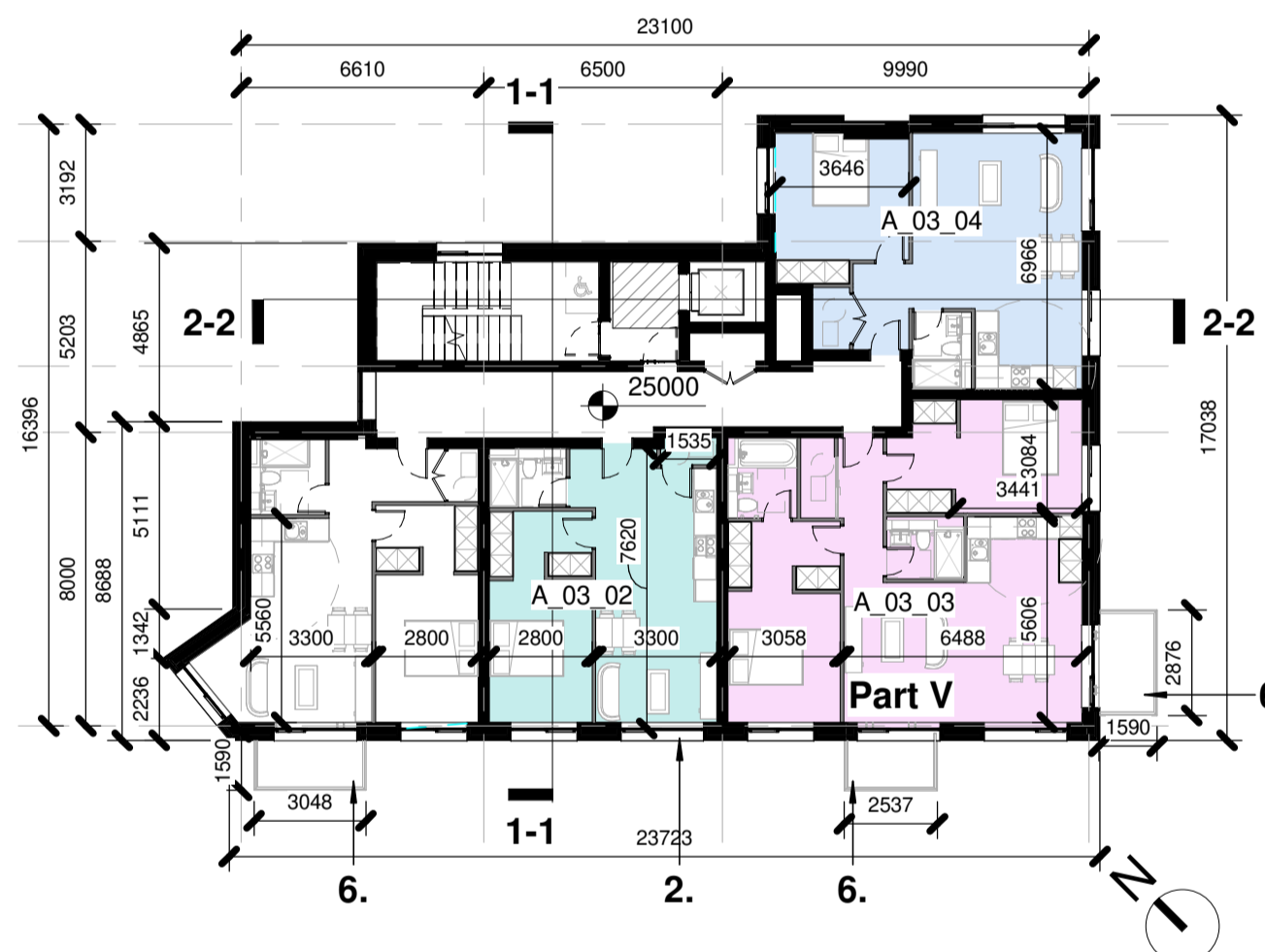
Ground Level - Childcare Facility
1 : 200



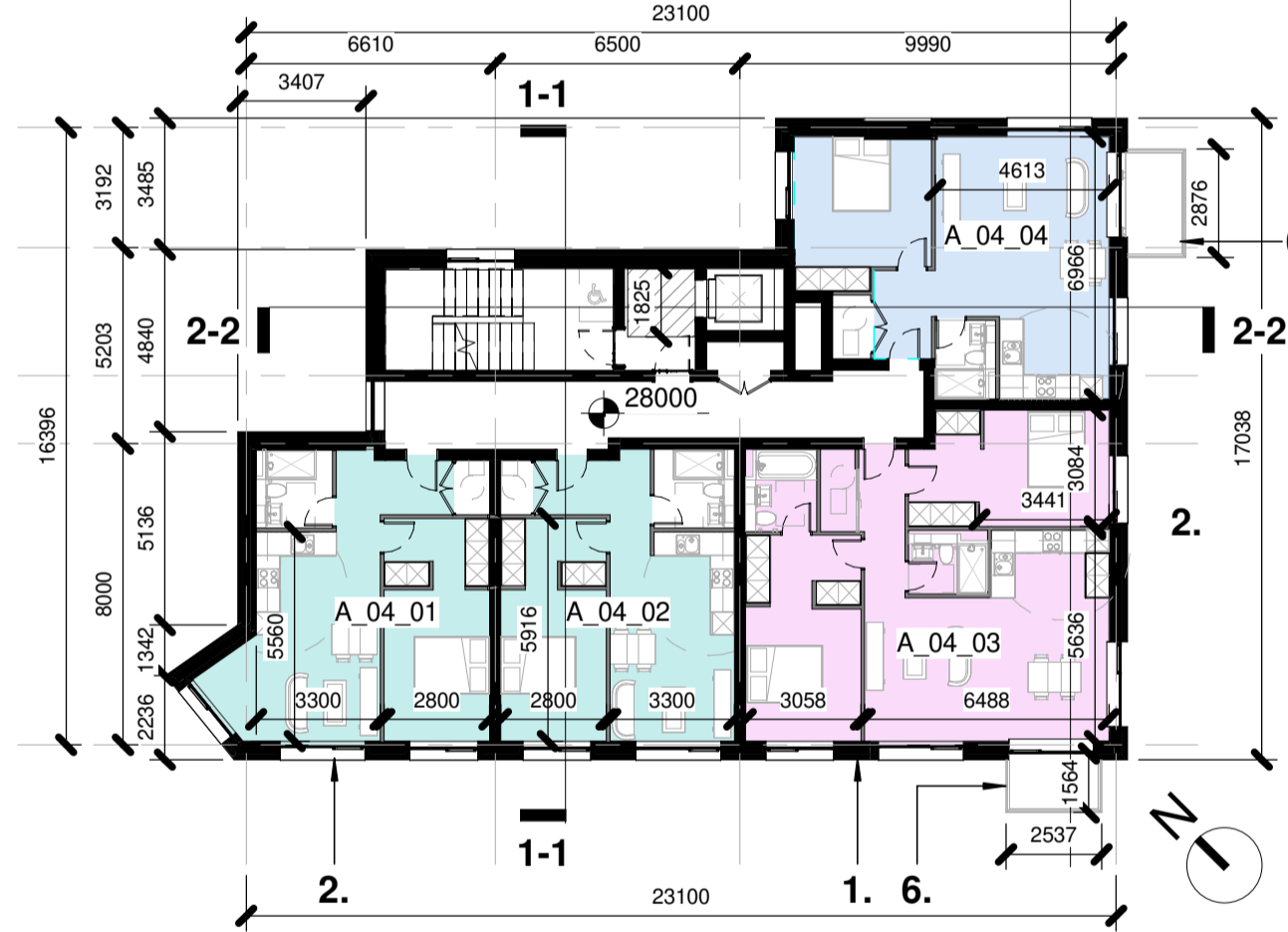
Level 01 - Child Care Facility
1 : 200



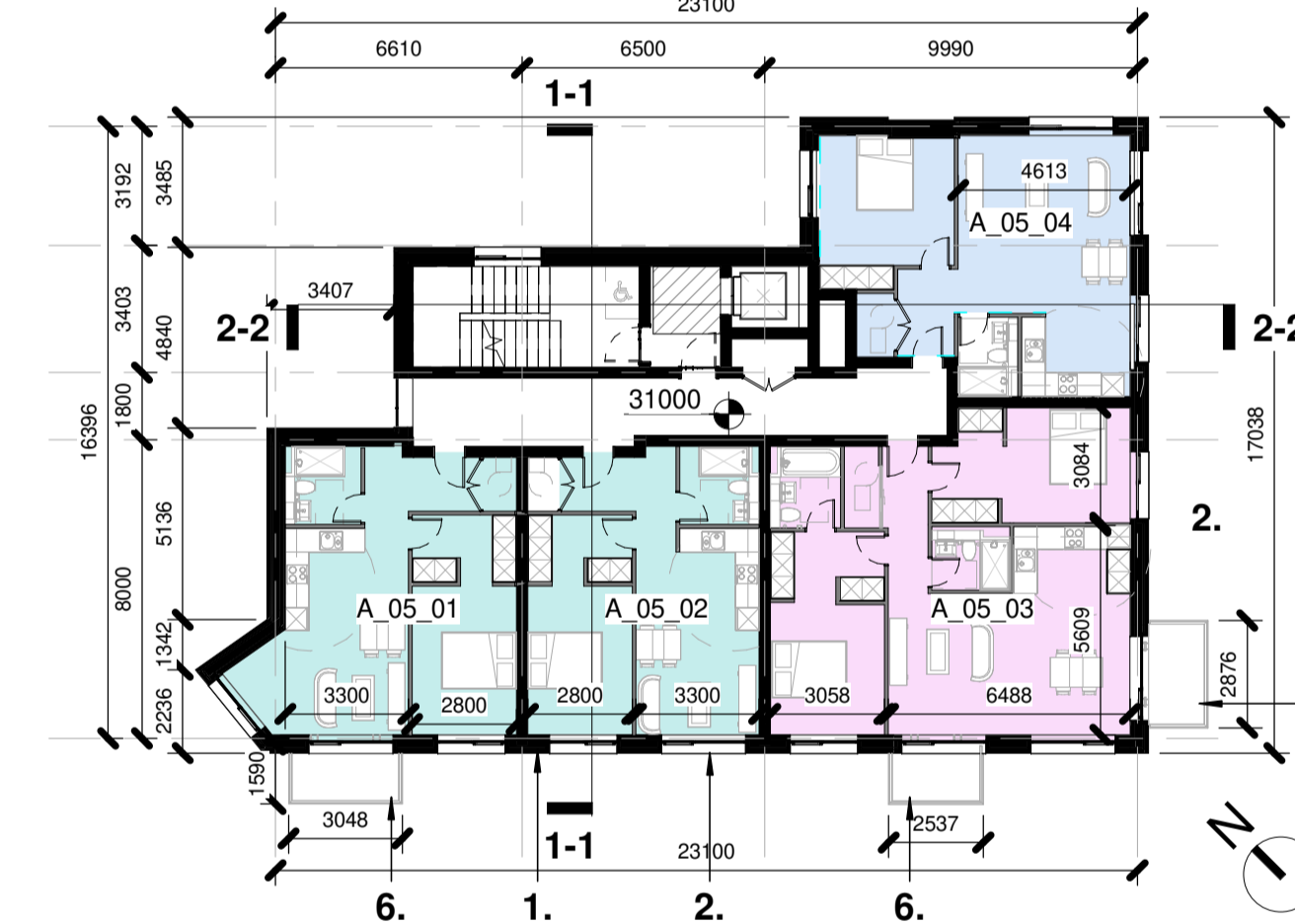
Level 02 - Part V
1 : 200



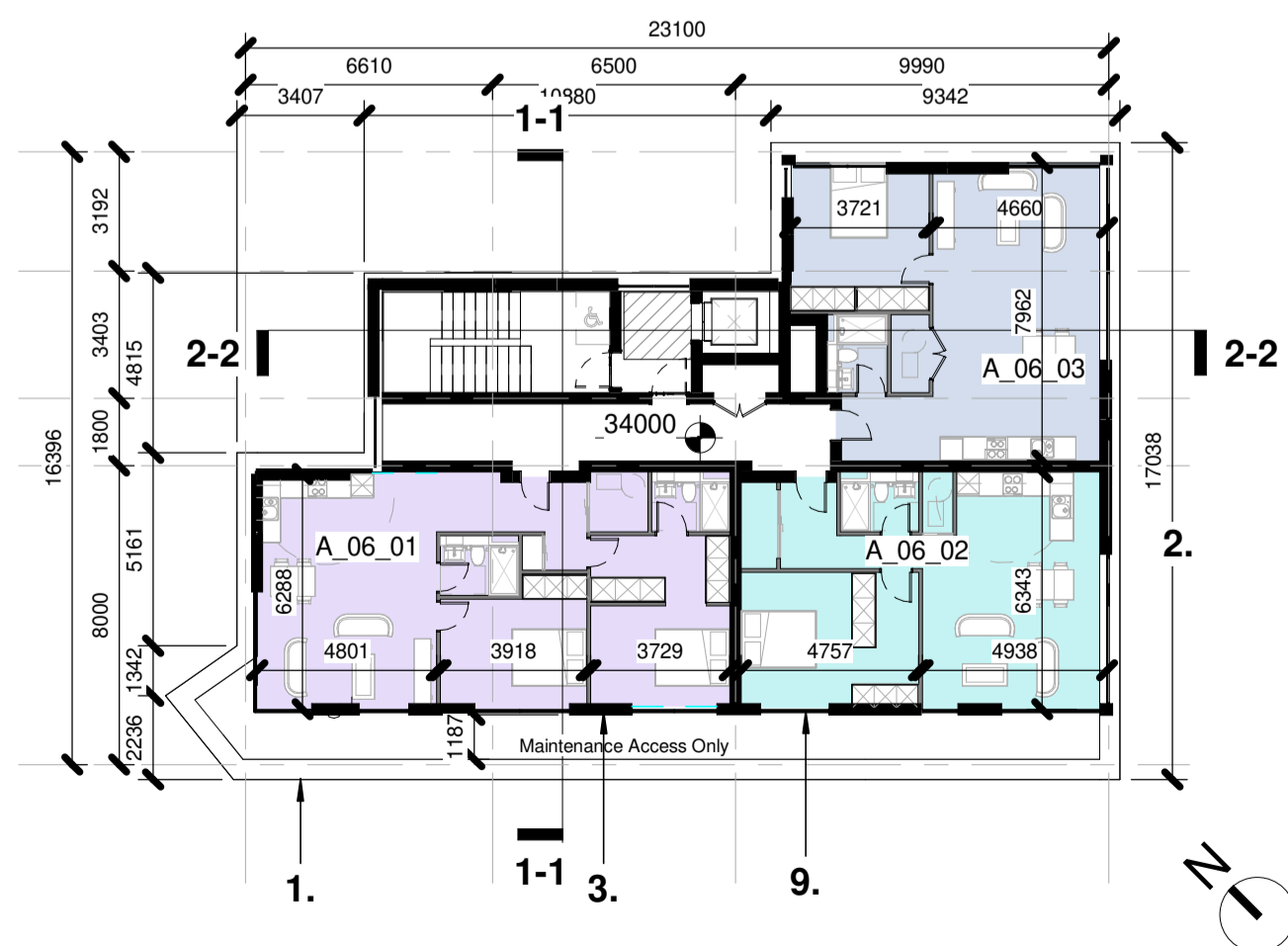
Level 03 - Part V (Partial)
1 : 200



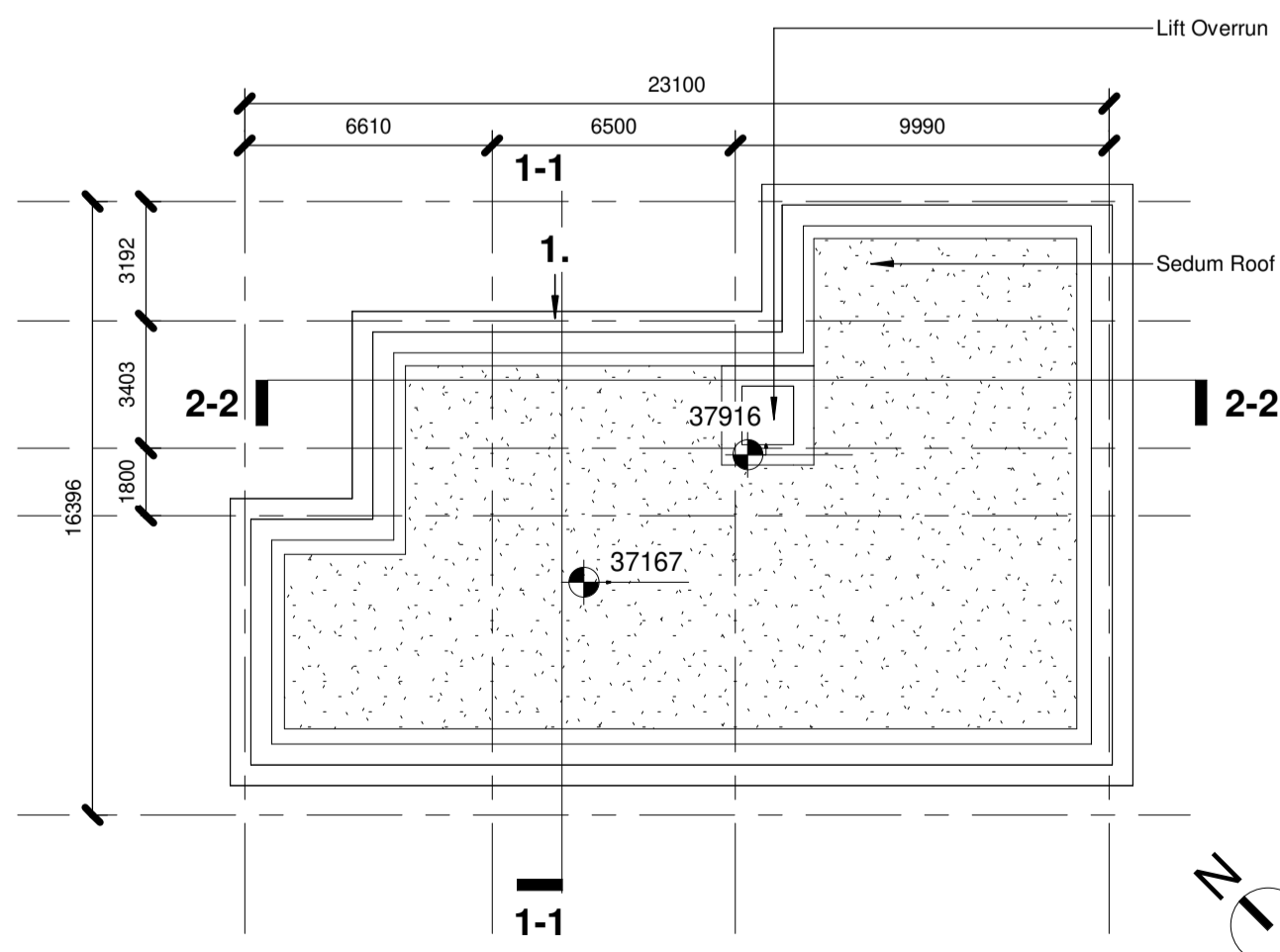
Level 04
1 : 200



Level 05
1 : 200

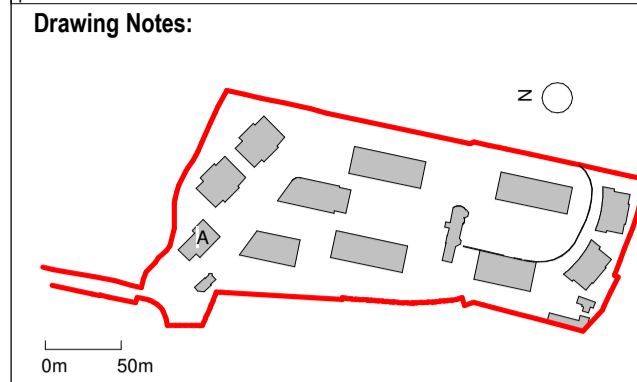


Level 06
1 : 200



Roof Level
1 : 200

Notes:
- Do not scale from this drawing. Use figured dimensions in all cases.
- Verify dimensions on site and report any discrepancies to the Architect immediately.
- This drawing is to be read in conjunction with the Architect's Specification.
- © This drawing is copyright and may only be reproduced with the Architect's permission.



1. Selected Oat Brick
2. Selected Windows
3. Metal Panels (Colour RAL TBC)
4. Selected Render
5. Ventilated Grills
6. Glass Balcony
7. Powder Coated Metal Balcony
8. Selected Stone
9. Selected Glazing

- Room Legend_Name**
- 1B2P_01
 - 1B2P_02
 - 1B2P_03
 - 1B2P_04
 - 2B4P_01
 - 2B4P_02
 - Creche

Part V (Level 02 / 03)

- REVISIONS**
- A1. Tonal Change at Penthouse level.
 - A2. Double height windows changed to single height.
 - A3. Minor alterations to creche layout / elevations.
 - S2. Re-alignment of the Basement Car Park Entrance. The Entrance is now located underneath Block B.

Revision Number	Date	Drawn	Details of Issue / Revision
P02	19.05.23		Response to RFI
P01	29.04.22		Issued for Planning



Client Details:
GEDV Monkstown Owner Limited, 3rd Floor
Kilmore House, Park Lane, Spencer Dock,
Dublin 1.

Project Details:
Dalguise
Monkstown

Drawing Title:
Proposed GA plans - Block A

Job No.	Sheet Size	Scale @A1:
P21-066D	A1_	1:200
Issue Date:	Drawn By:	Reviewed By:
24/10/2022	MG	EOB

Status	Purpose of Issue	Revision
P01	PLANNING PERMISSION	
		P02